

INSTRUCTIONS FOR ASSEMBLY OF 40' GONDOLA

READ THESE INSTRUCTIONS CAREFULLY BEFORE BEGINNING CONSTRUCTION OF THIS KIT.

Begin construction by making up the sides. Using the drawing as a guide, put all vertical and angled braces in place. Make up the following pieces to be used as braces:

From the $1/8$ " hat sections make 14 pieces $1\ 5/16$ " long and 4 pieces $1\ 1/3$ " long.

From the $1/16$ " Zee make 12 pieces $1\ 7/16$ " long and 4 pieces $1\ 3/8$ " long.

Refer to the drawing for location of the various braces. Measurements can be taken directly from the drawing. Locate the vertical braces first and cement them in place. After these have set, glue the zee braces in their proper locations. After the vertical and angled bracing is dry, make the lower bracing. USE GLUE SPARINGLY!

Make the lower bracing using $3/32$ " angle. The outside of the angle is turned down while the top of the angle is toward the center of the car. Locate ladders on side of car.

Locate holes for grabirons in the sides and ends.

Prepare the ends. Trim excess ladder materil from top of ladder, molded on ends. Apply brake detail to end.

Glue the sides and ends to the bottom.

Make sure that both sides and ends are flush all around the top of the car. Bottom of car should fit snug against angles at each end of car. Bottom of end should be flush with bottom of car.

Detail underbody. Locate and glue centersill. If you are making the tinsplate version, use the left side of the underbody plan. If you are using the scale version, use the right side of the plans. For the scale version cut 16 pieces of the $3/32$ " channel to $11/16$ " long. These make the underbody bracing. For the tinsplate version make 8 pieces $11/16$ " long and two $1\ 11/16$ ". Locate tinsplate or scale truck bolster according to drawing.

After underbody is completed, put $1/32$ by $3/32$ stripwood around top of car. Make the stripwood flush with the inside of the car. Locate and place $3/32$ angle along sides on top of bracing.

Entire car should be painted black. We reccomend FLOQUIL paint for a smooth job. It does not cover minute detail.

See photograph glued to top of box for location of lettering.

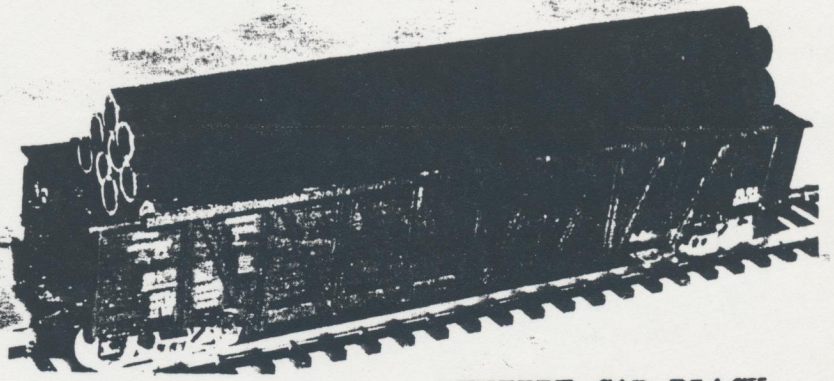
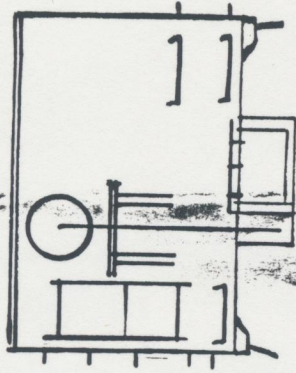
IF ANY PART OR PARTS OF THIS KIT ARE MISSING, NOTIFY US AT ONCE.

BRANCH LINE MODELS

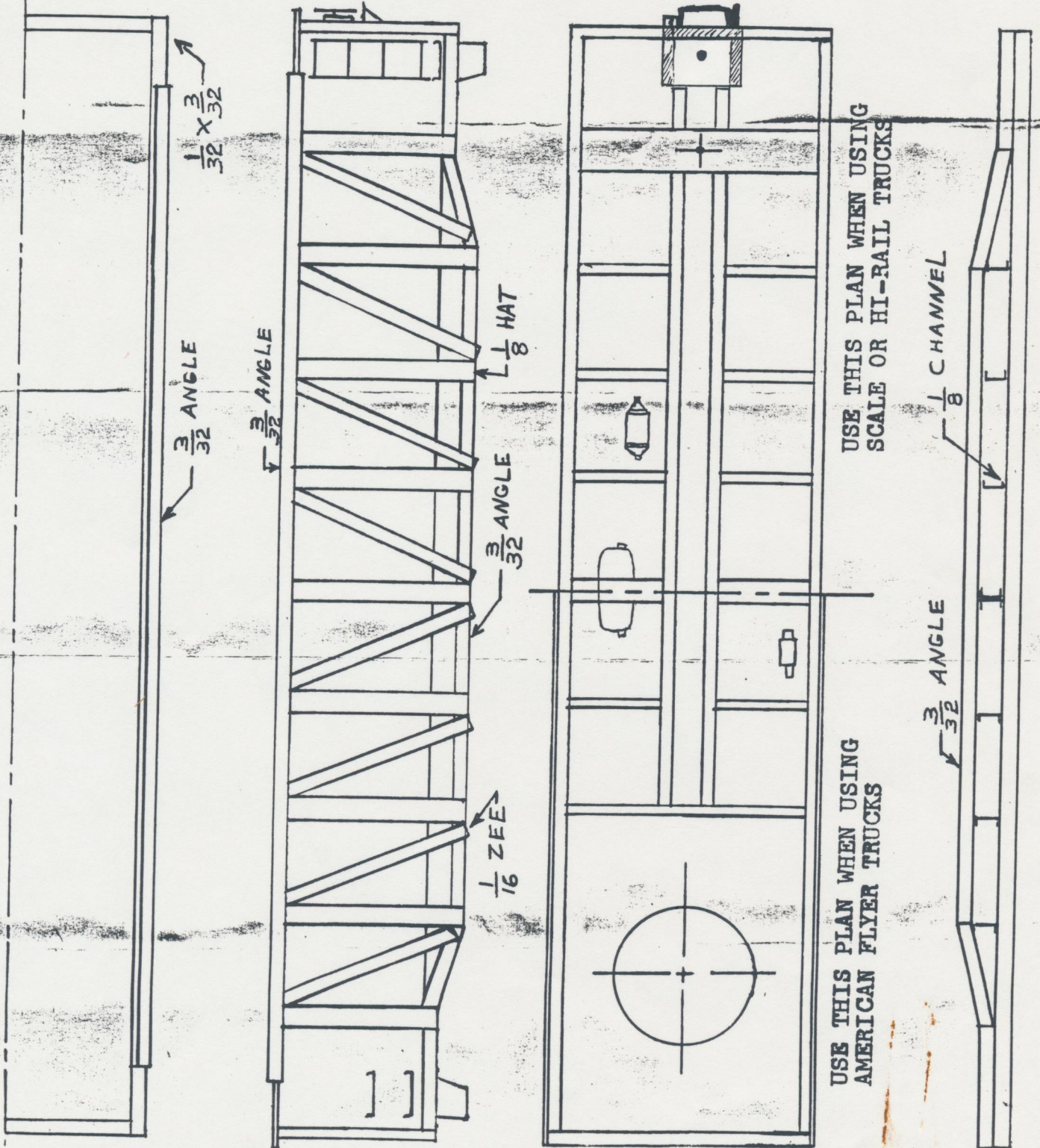
P. O. BOX 6482

MEMPHIS 11, TENNESSEE

BRANCH LINE MODELS
S GAUGE
40' COMPOSITE GONDOLA



ENTIRE CAR BLACK



USE THIS PLAN WHEN USING
SCALE OR HI-RAIL TRUCKS

USE THIS PLAN WHEN USING
AMERICAN FLYER TRUCKS