



West Shore Line Kits are manufactured exclusively for Central Hobby Supply, 716 West Manlius Street, East Syracuse NY 13057. If any part is damaged or missing, write at once for a free replacement. And if you accidentally damage a part during assembly, we'll replace it free to insure your satisfaction. Simply write us, describing the part(s) you need. It's not necessary to return the damaged part.

New York Central Standard
Nine Panel Steel Gondola

Manufactured exclusively for



This car is composed of special tough resin castings that are made in hand filled molds. Small surface defects, (tiny bubbles, etc.) can occur. These are easily filled with modeling putty and sanded smooth. We recommend any gap filling type cement, but five minute epoxy will also work. Any type of hobby paint can be applied to the castings; we like Floquil best. We also strongly suggest washing the castings after filing to wash away filings, dust, and finger grease. Use luke warm, NOT HOT, soapy water and rinse well.

This kit represents the standard NYC nine panel steel gondola car. These cars were built concurrently with a USRA rebuild program. The S scale drawing represents the car this kit builds. The smaller supplementary HO drawing illustrates the more modern lettering style.

Step 1: Clean all castings of flash if you have not already done so. Drill underframe bolsters for your choice of trucks. If you are modeling an empty car, metal trucks will aid greatly in weighting the car.

Step 2: Cement the floor to the underframe. We suggest using acc with great care to do this. Better yet, use an all purpose vinyl adhesive (ie. Weldbond; available in any big hardware or lumber yard) or 5 minute epoxy. Either of these choices allow you positioning time.

Step 3: Assemble the ends and sides. Cement them together; keeping them as square as possible. Adjust the frame to fit snugly into the side/end assembly. When you are satisfied with the fit cement it in place.

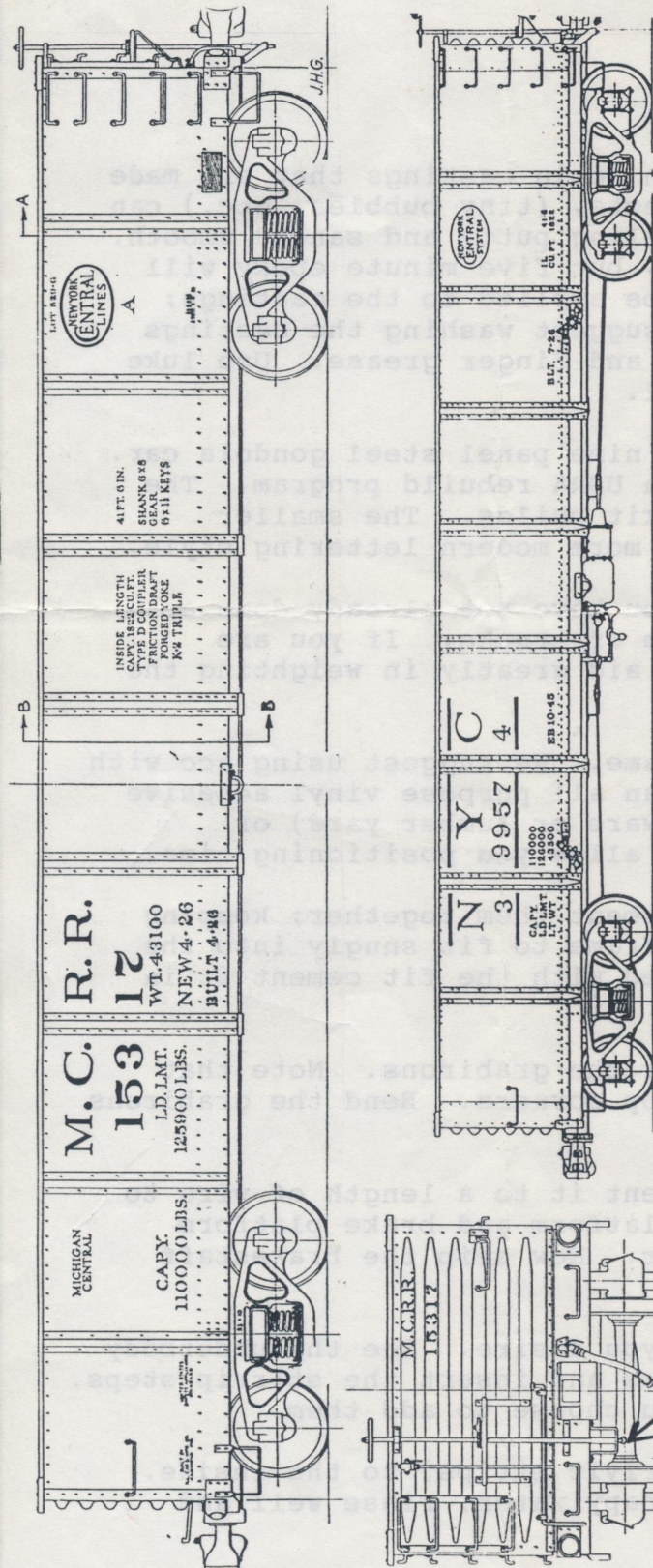
Step 4: Drill #76 the sides and ends for the grabirons. Note that only the straight grabirons are at the top corners. Bend the grabirons from the wire provided.

Step 5: Drill #76 the brakewheel and cement it to a length of wire to form a stemwinder. Assemble the brake platform and brake platform supports. Cement the assembly to the car. Now slip the brakestaff in place.

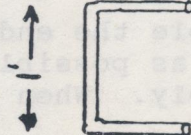
Step 6: Add as much underbody detail as you desire. See the underbody drawing. Drill #76 the edges of the sides and insert the stirrip steps. Use the eyebolts for the cutlevers if you choose to add them.

Step 7: Add the interior braces (the 16 rivit strips) to the inside. Now wash the car carefully in lukewarm soapy water, rinse well and allow to dry.

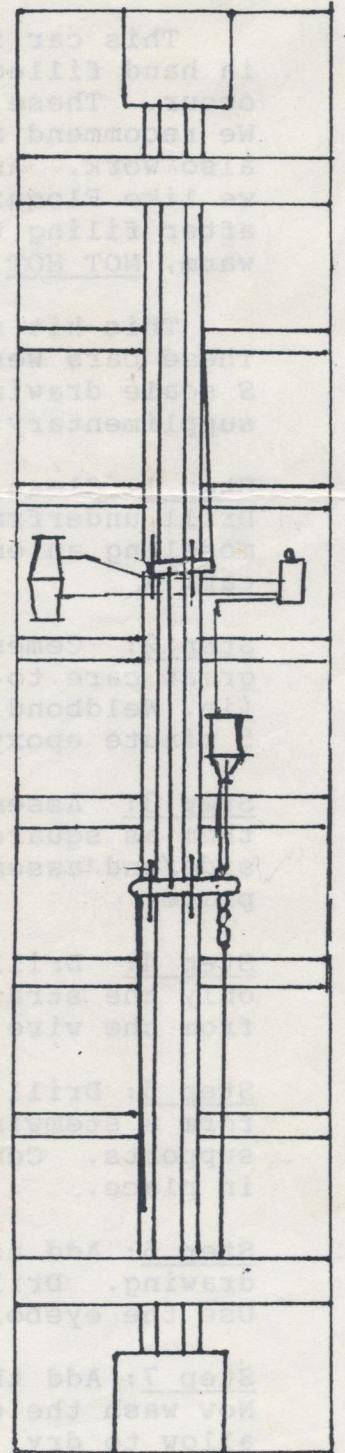
Step 8: Paint. (we use Floquil) Paint the entire car a mix of 75% Boxcar Red and 25% Caboose Red. We recommend air brushing several light coats as opposed to one heavy coat. A final coat of 75% HI-Gloss and 25% paint seems to wrk better than just HI-Gloss. Allow this to dry for several days before applying decals. For the two color decal apply the black background first with setting fluid. When thoroughly dry repeat with the white top layer. Apply a coat of Dullcoat and weather the car to taste.



Make from 2 x 4 styrene strip



Bend from wire,
Drill #76



23
16