

FINESTKIND MDL'S

OPHIR TRAMHOUSE KIT #103

BEFORE YOU START:

Sort and identify all the parts and visualize each step. Most of the wood parts have been cut to length for you and should need no further work. Where the wood is to be cut, the instructions will tell you what to do. Some of the castings detail parts may need to have a bit of flash removed before painting and gluing them in place. Be careful with the castings, as some are very small and can be easily broken. If you plan to stain or paint your model, this should be done before the assembly, as most stains do not 'take' to the glue joints. Cut apart the templates from the rest of the drawings and fasten them to a flat working surface. Cover these drawings with wax paper and fasten so it will not shift or wrinkle.

STEP 1: WALLS

Start your construction of the tramhouse side and rear end walls by first tacking 6 of the 14 precut 8" X 8" X 6'6" pieces to the template. One at each end of the short right side wall, and one on either side of the window openings (indicated by the solid lines). Take another piece of 8" X 8" X 6'6", and tack it in place on the rear end wall drawing for its center post. Next, cut from the 8" X 8" X 38'9" stock, 4 pieces 19'2". Set two aside for now and glue the remaining two, one each, to the top and bottom of the rear wall center post. Until this has dried, you might want to use two of the remaining 8" X 8" X 6'6" post for temporary supports on each end. Next, continue the side wall construction by gluing a 64' long 8" X 8" to the bottom of the side wall posts, making sure they are square and flush at the ends. Next, cut 3 pieces from the second 8" X 8" X 64'; 1 pc 8' X 9", 1 pc 12', and 1 pc 34'. Glue each piece in their respective place on the side wall template, spanning each of the wall posts at their tops. Once the wall frame has dried, carefully remove it from the template and set aside. Now, build the left side wall frame by using 6 of the remaining pieces of 8" X 8" X 6'6" again tacking one at each end, and again, one at each on one of either side of the window openings (indicated by dashed lines). Now, glue the first of two 8" X 8" X 72' pieces to the bottom of the side wall post, again making sure they are square and flush at the ends. Next, cut 3 pieces from the second 8" X 8" X 72'; 1 pc 14'4", 1 pc 31'4", and 1 pc 17'. Glue in place as before spanning each of the wall post at their tops. Once this unit has dried, carefully remove it from the template and set aside. Next, using the rear wall frame template, cut 4 pieces (2 pairs) of gable roof supports from the 8" X 8" X 30' provided, and glue these pairs together at the tops. Attach one pair to the rear wall frame, by gluing it to the top of the wall frame, and set the other pair aside to be used later. Now, using the front wall template, cut 3 pieces from the 8" X 8" X 30' stock as shown for the front gable roof support, and glue together. Once dry, mark the location of the window and carefully remove the assembly from the template. Before continuing onto the next step, cut to fit and ACC glazing into each of the frames of the tramhouse windows. Now install them into both the side and front gable wall frames by ACCing the windows into their framed openings. Make sure they are flush with the top of the side walls, and extending about 1/32" out from the front face of the three wall frames.

STEP 2: BENT ASSEMBLY

Start the first 2 bents by tacking the 12" X 12" bent caps to each of the templates, one cap is 20'6", and the other cap is 22'. Glue the bent post to the bottom of the bent caps. Start with the 22' long post for the front bent, and then the 21' long post for the first center bent, as per their locations on the drawings. Next, cut to fit, then glue two diagonal 12" X 12" braces inside each of the bents first two post as per the template drawing. Once the bents have dried, remove them from the templates and set aside. Build a second center bent, again by starting with the 20'6" bent cap, then gluing the four 21' post in place, as well as cutting, fitting, and gluing two more 12" X 12" diagonal braces inside the bent post. With the three bents built, you may now cut to fit, and glue in place the remaining braces. Start with the two 3" X 10" cross and one 3" X 12" horizontal braces for the front bent and then two 3" X 12" horizontal braces for each of the two center bents. Now, add the N.B.W. castings provided, by drilling holes with a #76 drill bit in the locations marked on the drawings and ACC the castings in place. Remove the bent from the template and set it aside.

STEP 3: FLOOR FRAME AND DECKING

Start the floor frame by taking 4 pieces of 12" X 12" X 72' stock, and cutting each one to the length needed, as per the floor frame template. Tack these pieces over the template. Next, add the precut to width scribed decking to the floor frame member. Start at the square end, and glue each piece with the smooth side up and the scribed side down, keeping both the frame and decking square at all times. Continue adding this decking to the length of the frame, leaving a small piece overhanging the skewed end. Once the frame and decking has dried, turn the assembly over and cut off the excess decking material flush with the ends of the floor beams. (A razor saw would be the best tool for making this long of a cut). With the assembly still turned over and using the left side drawing, locate and glue in place the four precut 12" X 12" X 24' floor reinforcement beams to the floor frame. These beams will eventually span across the tops of the two center bents when they are attached later. Next, glue the 12" X 12" X 20'6" rear ground support beam to the square end of the floor frame unit. Set the entire assembly aside and weigh it down to insure it will dry flat and straight.

STEP 4: ORE SHOOT FRAME SUPPORTS

Starting with the two precut 12" X 12" X 9'6" rear support post^s, measure up from the bottom 6' on each piece, marking the location for the bottom of the precut 6" X 12" X 4' horizontal brace. Glue this piece in place between the post, making a small H type assembly. Repeat this for the building of the front ore shoot support, but by cutting from the stock provided, two 6" X 6" X 8' post, and one 6" X 6" X 3' horizontal brace. While they are drying, cut from a 12" X 12" piece of scrap, two spacer blocks about 2' long. Glue these pieces inside the bottom of the front bents first two posts as per the drawing. Now glue the small 6" X 6" H frame made earlier to these short spacer blocks, but making sure the H frame is even on the bottom and flush with the back edge of the bent, as per the left side drawing. Still using the left side drawing, take the two 2" X 12" X 8'3" provided and cut off one end on each board to match the slope of the ore shoot support braces. Now locate these pieces using the front view drawing and glue them to the back of the horizontal 3" X 12" on the front bent assembly. Once these braces have dried,

stand the front bent assembly up vertically. Now, glue the second (rear H) ore shoot support to the two support braces. This is done by placing the support braces inside the top of the (H) support, keeping the support vertical and spaced 6' behind the front bent assembly as shown in the left side view. Now, set this assembly aside, keep it vertical while it dries.

STEP 5: CORRUGATED SIDING

Before you start to add the corrugated tin to the side and end walls, you first need to carefully cut $4\frac{1}{2}$ of the 5 tin sheets into $1\frac{1}{2}$ " X $5\frac{3}{4}$ " strips. Then again into 3' X 8' panels. Set aside 125 of these panels for the roof and end walls. When cutting the tin, make several light strokes with a sharp knife and a straight edge, or a Northwest Short Lines duplicutter. Once you have cut the strips into panels, you should pre-weather them before installing them onto the wall frames. This can be done as suggested in part 6 of our construction and weathering hints. With the siding now ready to be installed, place the two side wall frames with the protruding window side up in front of you. Start by attaching (ACCing) the first piece of siding to the far left end of each wall frame. Make sure that this piece is flush at the top and end of each wall frame, and leaving the overhang on the bottom. Continue adding panels to the wall frames, overlapping each panel onto the next by 1 ribb, and again making sure that they are flush at the top of the frame. When you reach the window openings, carefully cut each piece of siding to fit around the windows plastic frame. Finish adding the siding until both the side wall frames are complete, trimming off any excess tin flush with the end of the wall frame. Once this is done, set them aside to dry, weighing them down to prevent warpage.

While the two side walls are drying, continue to cut up the last of the corrugated tin for the rest of the tramhouse. Start by taking the remaining $\frac{1}{2}$ sheet of tin, and cut it into 3' wide panels the length of the sheet. Out of these 10 panels, you will need to cut 5 pcs 11', 2 pcs 8', 2 pcs 9', 2 pcs 3', 2 pcs 6', and 4 pcs 5'. Set them aside for now as they will be used later to cover the gable end walls.

STEP 6: SIDE WALLS TO FLOOR ASSEMBLY

Before you start the wall to floor assembly, you must first cut out the ore shoot opening by measuring and transferring its location from the template drawing to the floor frame and deck unit. Once this is done, cut and file out the opening to match the configuration on the template drawing. Now, start the wall to floor assembly by first gluing the short left sided wall to the top of the floor frame unit. The bottom of the wall frame should be kept flush with both the front edge and square end, by leaving a very small gap on the skewed end. If needed, this gap can be filled by gluing a piece of 2" X 12" X 8' to the skewed end of the wall frame, trimming it later once it has dried. Now add the longer right side wall to the floor frame and decking unit, again keeping it flush with the front edge and square end but having some overhang, on the skewed end, which again will be trimmed off later. Now, using the side wall template, locate and glue in place the two 8" X 8" X 19'2" interior braces that you cut earlier. Make sure that the walls remain straight and vertical during this process. Once the walls have dried thoroughly in place, you may carefully trim off both the right and left side walls overhang, by using a razor blade or sanding block, and making them flush with the edge of the floor frame and deck unit.

STEP 7: END WALLS TO FLOOR ASSEMBLY

With the side walls and braces glued in place, you can now add both the front and rear gable end wall frames and siding. First, start with the rear wall, carefully taking the pre-built unit and placing it inside the two side walls, at the square floor end. Then check for squareness of all three walls before gluing in place. With this done, now build the skewed front wall by carefully cutting to fit, two 8" X 8" pieces of stock for the top and bottom of the front wall frame. Glue these two pieces, plus the last remaining 6'6" center post in place, making sure they are flush with the edge of the flooring and tops of the side walls. Note: These assemblies should have a good fit but should not place any pressure on the side walls. Now, add the pre-built front gable roof support, by gluing it on top of the front wall frame as per the template drawing. With both the end walls and gable roof supports installed, you can now continue to add the 3' X 8' corrugated tin siding panels. Once again, start by attaching (ACCing) the first piece of siding to the far left end of both end wall frames. Make sure that these panels are flush with the top of 8' walls, top frame member, yet leaving a little overhang on the end to cover the side walls edges. Continue adding panels to the wall frames overlapping each panel onto the next by at least 1 ribb, and again making sure that they are flush at the top of the frames. Finish adding the siding panels until both the end wall frames are complete, trimming off any excess tin flush with the edge of the side walls. Before going on to the next step, find the center of the tramhouse, and glue the last pre-built roof support in place. Now, cut 2-8" X 8" pieces of stock to fit between the two gable end walls, and center roof supprt at their peaks. Glue these two pieces in place. Once this is done, measure down from the top, on each side of the ridge pole, 8' and mark the locations onto both gable end walls and center roof supports for two more roof reinforcement beams. Now cut four pieces of 8" X 8" stock to fit between the two gable end walls and center roof supports at the locations you just marked. Glue these in place with their top edge of the 8" X 8" even with the 8' mark. Set aside the entire tramhouse unit to dry.

STEP 8: MOUNTING BASE

While the tramhouse unit is drying, now is the time to build a small base for the soon to be completed model. We suggest using either plywood or Homasote R for the base, cutting it about 6" X 16". Next, locate and mark both of its center lines. Once this is done, continue marking the locations of each of the bent and support assemblies, by using the dimensions from the drawings, and the bases lengthwise center line (or track center line) as a starting point. Now take each of the bent assemblies, as per their locations, and mark onto the base the center of their individual post. These locations will be used for mounting of the bent units with the use of small wire studs. Begin adding the wire studs by drilling $\frac{1}{4}$ " deep holes into the base with a #65 drill bit, at two or three of the center locations for each bents post. Using the wire provided, cut each wire stud about $\frac{3}{8}$ " long and ACC them into the holes. Once the studs have dried completely, carefully take each bent assembly, as per their required locations, and press them down onto their studs until all of the bents post are touching the base. At this time, you may either glue in place or leave the bent assemblies free standing units. When the time comes to add the rest of the tramhouse to the top of the bents,

this same wire stud method can be used between the bent caps and the floor frame members.

STEP 9: TEMPORARY ORE SHOOT INSTALLATION

Begin the installation by sliding the trough piece of the ore shoot across the top of the front H supports 6" square cross brace. Then between the two 2" X 12"s resting its back edge on top of the rear (H) supports cross brace. With this done, you may add the longer ore shoot tube by placing it between the two 2" X 12" rear (H) frame support braces and behind the 3" X 10" horizontal brace on the front bent resting it on the front edge of the trough. These pieces will be glued in place later when the final assembly of the tramhouse to the bents made. So for now, set the modular base unit, with its bents and ore shoot, aside for now, and continue on to the next step.

STEP 10: GABLE END SHEETING

Begin adding the remaining corrugated panels to the gable end walls. Start by taking the panels, of various lengths you cut earlier from the 1/2 sheet, and lay them out into two separate rows in the following order: for the front gable end walls: 3' X 3', 3' X 5', 3' X 8', 3' X 11', 3' X 11', 3' X 11', 3' X 8', 3' X 5', 3' X 3'; and rear gable ends: 3' X 5', 3' X 6', 3' X 9', 3' X 11', 3' X 11', 3' X 9', 3' X 6', 3' X 5'. Working left to right, take one panel at a time, from the row for the front gable end, and lay it over the front end wall drawing. Overlap this piece onto the lower half of the wall about 6"-9", keeping it perpendicular with the rest of the drawing. Next, cut the top of this panel to match the roof slope of the drawing, then remove it, and attach (ACC) the panel in the same location on the front gable end wall frame. Repeat this procedure for each of the remaining panels on the gable front wall, overlapping each panel by 1 ribb. When you reach the window opening, carefully cut each panel to fit around the plastic frame. Then continue adding the panels until the front gable wall is completed. Now begin adding the siding panels to the rear gable end wall using the same left to right method of panel installation as before, excluding the cutting out of the tram cable openings. This is done the same way as the windows above, only using the rear gable end wall drawing for their locations and dimensions for cutting. With the gable end sheeting in place, continue onto the next step.

STEP 11: WINDOW AND DOOR TRIM

With the tramhouse assembly itself thoroughly dried, begin the trimming of the tramhouses five windows and two rear doors. Using the 1" X 4" stock provided, start by cutting 22 pieces of window trim; 6 pcs 5', 6 pcs 4'10", and 10 pcs 2'10". Once this is done, begin adding the trim to each window by ACCing the first piece of 1" X 4" X 5' to the bottom of the inner edge of the plastic window frame protruding from the wall. Next, add the two 2'10" side pieces and then the 4'10" top piece to each window. Again, ACCing the trim to the inner edge of the plastic window frame protruding from the wall. The trimming of the two rear doors is next. Cut one pc of 1" X 4"; 4 pcs 7'0", and 2 pcs 6'9", and ACC them onto the rear wall, as per the door trim locations on the drawing. When finished, take four of the remaining 3' X 8' panels and cut each one of them to fit inside the door frames and glue in place. Thus completing the trim work for the tramhouse.

STEP 12: TRAMHOUSE ROOFING

Begin the final corrugated assembly by applying the bottom (first) row of precut 3' X 8' tin panels to the straight end of the roof. Starting with and gluing in place the first panel by overhanging its edge one foot over the edge of the gable end wall, and keeping its top flush with the top of the 8" X 8" roof reinforcement beam. Continue adding panels to the remainder of the roof. As before, overlapping each panel by 1 ribb, keeping the top edge flush with the top of the roof reinforcement beam. Let the last panel overhang the edge of the gable end wall by a foot or more, so it can be cut off later. With the bottom row on one side complete, turn the structure around and complete the other as described above. Once this is done, finish the tin roofing assembly by adding the top (second) rows of the tramhouse roofing. Again, start on the straight end as before but this time doing both sides at once and gluing the top edge of each of the two sides panels to the center of the 8" X 8" ridge pole beam. Thus overlapping each piece about 6" onto the top edges of the bottom row of roofing panels. Continue adding the rest of the roofing panels, by overlapping one onto the next by 1 ribb and letting the last panel overhang the edge of the gable end wall by a foot or more. With all of the tramhouse roofing in place, you can now trim the skewed roof end. First, remeasure the roof overhang of one foot from the skewed gable end wall, marking it on the top of the roof. Now using a straight edge, and a very sharp knife, carefully score the roofing with several light strokes until you cut completely through the tin roofing. Once you have completed one side, repeat this same procedure for the other, making sure to keep the straight edge aligned with the newly cut edge at the peak of the roof. With this done, add the roof peak caps to both sides of the tramhouse roof. Start by gluing the first piece of 2" X 6" X 36' to the top edge of the left sides roof peak, making sure it's flush with the edge of the last roofing panel, and just covering the top edges of the top row of roof panels. Now, butt up against and glue the next piece of 2" X 6" X 36' in place as before, letting it overhang the skewed end. Repeat this same procedure for the right side of the roof peak. Once both pieces of the roof peak caps have dried, carefully trim off the overhanging ends of the boards flush with the skewed roofing panels. Thus completing this step.

STEP 13: ROOF RUNNER BOARDS

Using both of the end wall drawings, measure from them, and mark the locations of each of the roof runner boards onto their respective gable end walls. Note: The first and second runners on each side are 2" X 6"s; the third and fourth on each side are 2" X 8"s; and the last two at the peak are 2" X 10"s. Starting at the bottom of both sides of the gable end walls begin cutting each of the roof runner boards from the stock provided, one foot long, and gluing them in place to the underside of the roofing panels overhang. You have now completed the last of the construction assemblies of the tramhouse building, and are ready for the final step of installing the bents to the bottom of the tramhouse, which is covered below.

STEP 14: BENT TO TRAMHOUSE ASSEMBLY

Starting with the mounting base, the time has come to attach the completed tramhouse model to its bents supports. This can be done by one of two ways. The first way of using wire studs was covered in detail in Step 8. If you choose to use this method, you will be adding these studs to the top of the bent caps and ACCing them in place. Once they have dried,

align the bents as per the dimensions on the drawing and press the tramhouse onto these studs which will penetrate into the floor frame members. The second method of attaching the bents to the tramhouse is less difficult. This can be done by simply aligning the bents as before using the dimensions from the drawings and gluing them directly to the floor frame members of the tramhouse. Once you have completed either of these two methods, you may now slide the ore shoot tubing into the elongated hole in the bottom of the tramhouse flooring, making sure its front cut edge is against the backside of, approximately the center of the 3" X 10" horizontal brace on the front bent. You may now ACC both the ore shoot tube and the ore trough into place, as well as the two pre-cut 3" X 12" X 4' boards that are directly behind the ore tube and are on top of the 2" X 12" support braces, as shown in the left side drawing. Taking the remaining 8 pieces of 12" X 12" X 10' stock, and again using the left side drawing for the template, (providing the center two bents have been squarely attached to the floor reinforcement beams---if not cut to fit) cut and then glue in place the center bents diagonal braces, connecting each of the posts to the bottom of the floor reinforcement beams.

The last and final brace between the tramhouse floor frame and the first center bent can now be added. Again using the left side drawing, cut to fit a 3" X 12" diagonal brace. Glue this piece inside the first bent post on the right side of the tramhouse model and up to the inside of the first floor beam member on same side. Thus completing the final detailing step. Your model of the famous Ophir Loop Tramhouse is now ready for you layout. A few touches of stain on the cut ends of the wood and some powdered chalk dust for some additional weathering on the siding, roofing, and/or around the base of the model will help add some more character and variation of its appearance to your finished kit. We hope you have enjoyed building this kit and was the quality you expected.

**Property of
NASG Inc.**

You will find that most of the lumber strips supplied have been cut to the length you will need, as per the instructions and the list of materials below.

LIST OF MATERIALS:

14 pcs 1/8" X 1/8" X 6'6"-Wallpost
2 pcs 1/8" X 1/8" X 38'9"-Rear Wall Frame & Braces
2 pcs 1/8" X 1/8" X 64'-Top & Bottom Right Side Wall Frame
3 pcs 1/8" X 1/8" X 72'-Top & Bottom Left Side Wall Frame
2 pcs 1/8" X 1/8" X 72'-Roof Reinforcement Beams
2 pcs 1/8" X 1/8" X 30'-Rear & Center Gable Roof Supports
1 pc 1/8" X 1/8" X 48'-Front Gable Roof Support Frame
1 pc 1/32" X 1/8" X 8'-Right Side Wall Filler

3 pcs 3/16" X 3/16" X 20'6"-Bent Caps
5 pcs 3/16" X 3/16" X 22'-Bent Caps & Post
8 pcs 3/16" X 3/16" X 21'-Center Bent Post
14 pcs 3/16" X 3/16" X 10'-Diagonal Bent Braces
3 pcs 3/64" X 5/32" X 22'-Front Bent Brace
4 pcs 3/64" X 3/16" X 22'-Center Bent Brace

2 pcs 3/16" X 3/16" X 9'6"-Rear Ore Shoot Frame Post
1 pc 3/64" X 3/16" X 4'-Rear Ore Shoot Frame Brace
1 pc 3/32" X 3/32" X 20'-Front Ore Shoot Frame
2 pcs 1/32" X 3/16" X 8'3"-Ore Shoot Frame Bracing
2 pcs 1/32" X 3/16" X 4'-Ore Shoot Bracing

4 pcs 3/16" X 3/16" X 72'-Floor Frame Member
4 pcs 3/16" X 3/16" X 24'-Floor Reinforcement Beams

2 pcs 1/32" X 3/32" X 8'-Roof Runner Boards 1 & 2
2 pcs 1/32" X 1/8" X 8'-Roof Runner Boards 3 & 4
2 pcs 1/32" X 5/32" X 8'-Roof Runner Boards 5 & 6
4 pcs 1/32" X 3/32" X 36'-Roof Peak Caps

2 pcs .20" X 1/16" X 22'-Door Trim
3 pcs .20" X 1/16" X 30'-Window Trim
4 pcs 3 1/2" X 20'6"-Floor Decking

5 pcs 5 3/4" X 6" X .056"-Corrugated Tin
1 pc .058" X 6"-Wire Stud
1 pc 2" X 2"-Window Glazing
5 pcs #3719 Windows
30 pcs #12 Nut, Bolt, and Washer Castings
1 pc Ore Shoot Tube
1 pc Ore Shoot Trough

PROPERTY OF
MINE INC.

CONSTRUCTION AND WEATHERING HINTS:

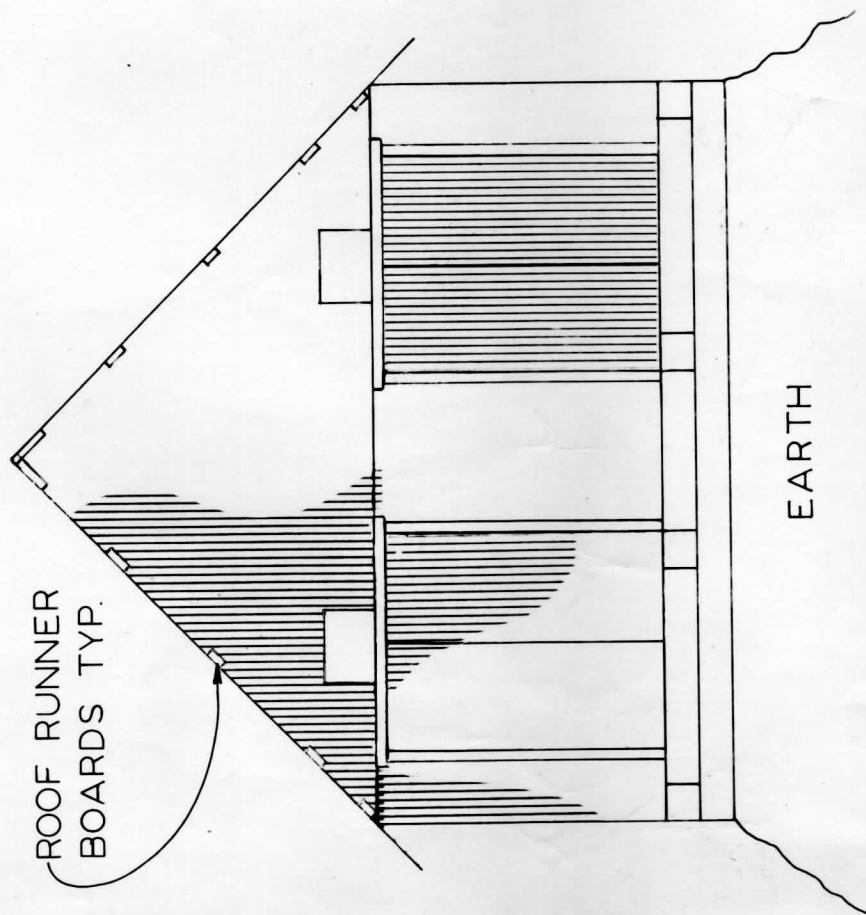
1. For best results, always use a sharp blade when cutting. A single-edge razor blade, which has a thinner section than most modeling knives, will make a cleaner cut since it does not press the ends of the wood it cuts. The use of a Shay Wood Miter or NWSL stripwood cutter is highly recommended, especially for parts to be cut to the same length. The few dollars spent for one of these tools are, in our opinion, well worth the investment.
2. Wood siding can be given a slight texture with a wire brush. We use an old brush designed for suede. After texturing, use steel wool to defuzz the wood. A coat of the finish color of paint applied before the final use of the steel wool will act as a sealer and make the wood fuzz more brittle, thereby easing its removal for a cleaner finish.
3. When using board and batten siding, there are several techniques that can be used to give this type of siding a very realistic appearance. A few of the battens can be lifted from the siding slightly by inserting a single edge razor blade at a very slight angle, and then lifting the batten away from the surface. (This method can also be used to raise a few random clapboards on that type of siding, or even to remove a portion of the clapboards for a really run down look.) When this method of weathering is used, along with a few missing battens, or parts of battens, or battens of varying sizes, you will hardly be able to tell that its not individual boards throughout. You might even paint a board here and there a different color from the main color. The trick here is that anything that suggests these are individual boards helps the illusion.
4. While on the subject of board and batten, this type of siding was generally not painted. We used Weather It by A West to recreate a naturally aged unpainted wood finish. A coat of black shoe dye and denatured alcohol (heavily diluted) over the siding also is a good weathering agent. You may also want to put a wash of this over painted casting too.
5. For the casting, we suggest air brushing them with Floquil Primer Gray before painting them a final color of your choice. You may even want to leave them the light primer gray for a more weathered and faded look.
6. The corrugated or ribbed seamed roofing can be difficult to weather, but the most realistic weathering can be achieved by etching this material with ferric chloride (found in Radio Shack stores under the name ETCHANT for printed circuit boards). Pour a quarter inch of Etchant in a large, flat bottomed plastic bowl. After the ribbed seamed roofing is cut to size, use tweezers to dip the material into the Etchant. Leave the material in the solution for only a second, remove it, and let it 'splatter' for a moment before rinsing it in a bowl of fresh water. Repeat this process until the degree of weathering you want is reached. (Careful, the material can dissolve if you do this too often). The resulting rusts, grays and blacks will only need a little dry-brush touch up after the material is installed on the model. This may be done by applying powdered chalks in lighter and darker rust colors. The powdered chalk dust is made from Rembrant Pastel chalks available in most art stores. Scrape or sand the side of the chalk and apply with a small paint brush.

7. Paint or stain everything before assembly. It adds only about an hour or less to construction time, but will greatly enhance the appearance of the finished model. An air brush, or the use of Floquil Barrier when brush painting is best for lacquer on styrene. Also, soak the parts to be painted in denatured alcohol to remove finger prints and grease.

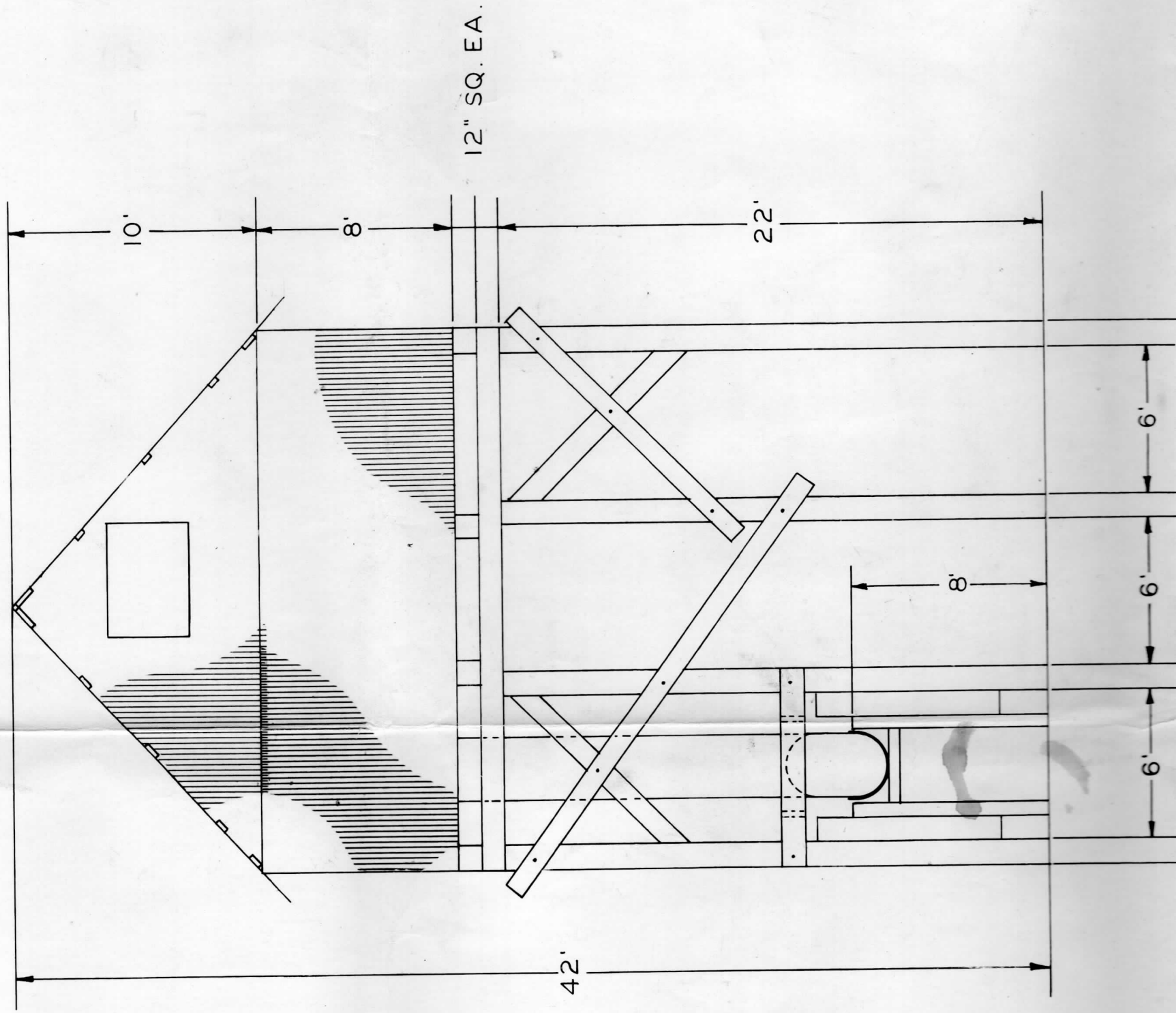
8. For adding decals to the front or sides of the buildings, use Walthers Solvaset to make the decals snuggle onto the wood sidings. After about 2 hours, use Solvaset sparingly and the decal will blend completely into the wood. After about 24 hours, the decal can be weathered by gingerly going over it with fine steel wool or a very fine grade of sandpaper until the desired effect is achieved...be careful not to over-do it. We also thinned some of the wall color out a bit and painted over the decal to give it a faded appearance. This has to be done very carefully, as the solvent in the paint will attack the decal. Make one brush stroke and then wait until that dries before making another one. You might want to practice on some extra decals if you have some laying around.

9. Finally, a word of caution, experiment on scraps of wood and extra castings with these techniques before using them on the actual model. We've tried to give you the basic ideas behind the techniques, but the application of them must be learned in most cases, with a bit of practice. We hope these hints are helpful to you in your modeling. You may have other methods that you favor for reaching the same goals. If you are comfortable with them and get the results that you desire, stick with them. Enjoy, and happy model railroading!

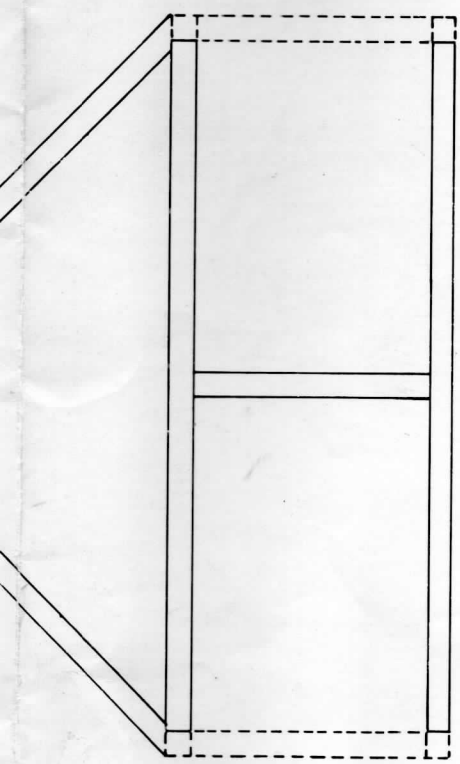
REAR END WALL
WITH ROOF OVERHANG



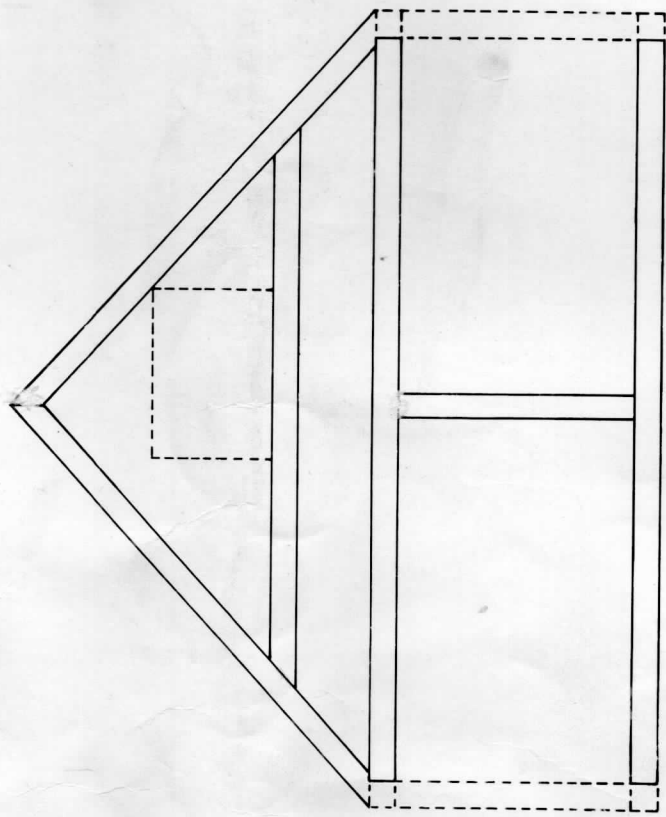
FRONT END WALL
WITH ROOF OVERHANG



OPHIR TRAMHOUSE
FINESTKIND MDL. CO.
S SCALE KIT #103
3/16" = 1'-0"



REAR WALL AND
ROOF FRAME

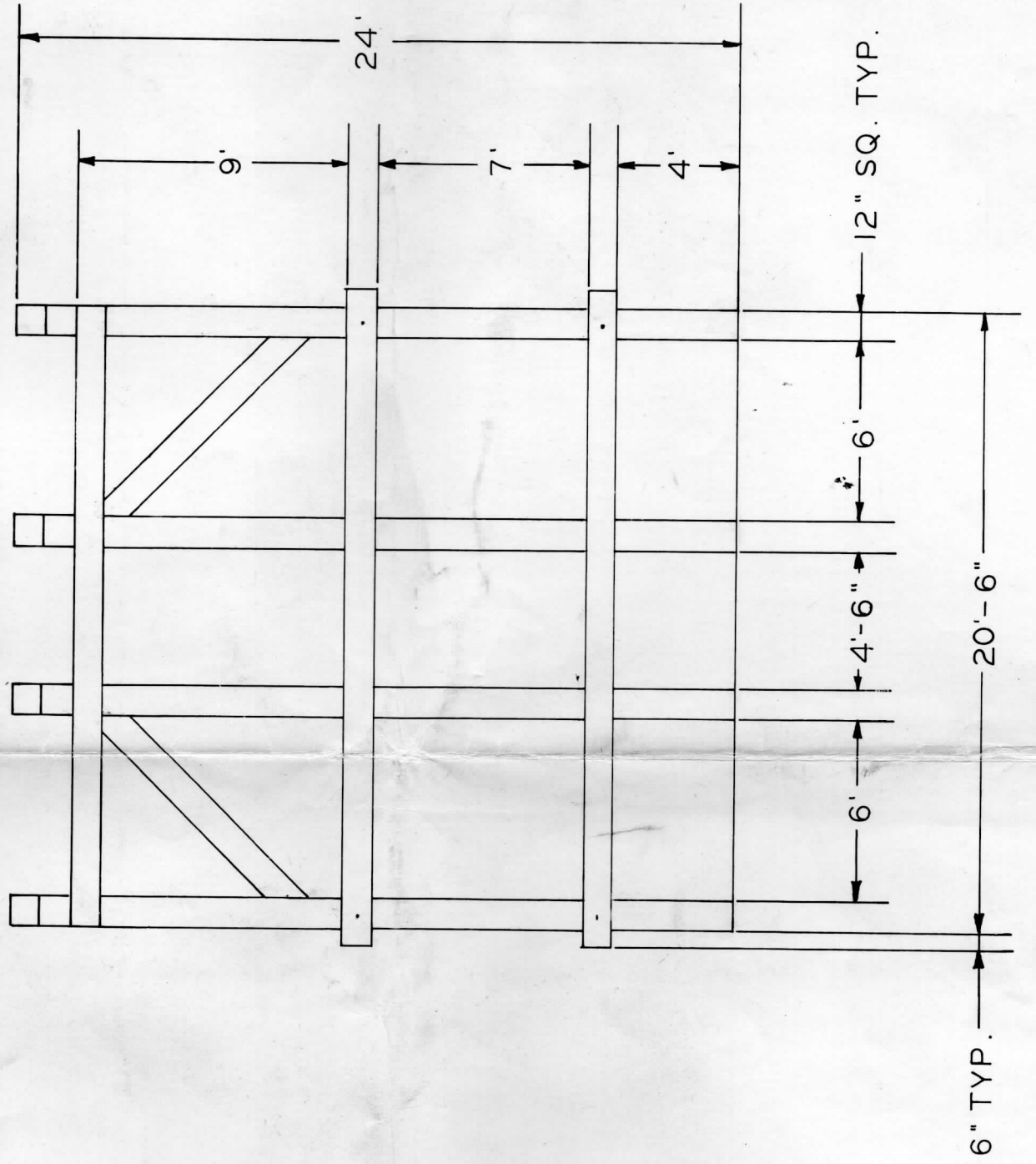


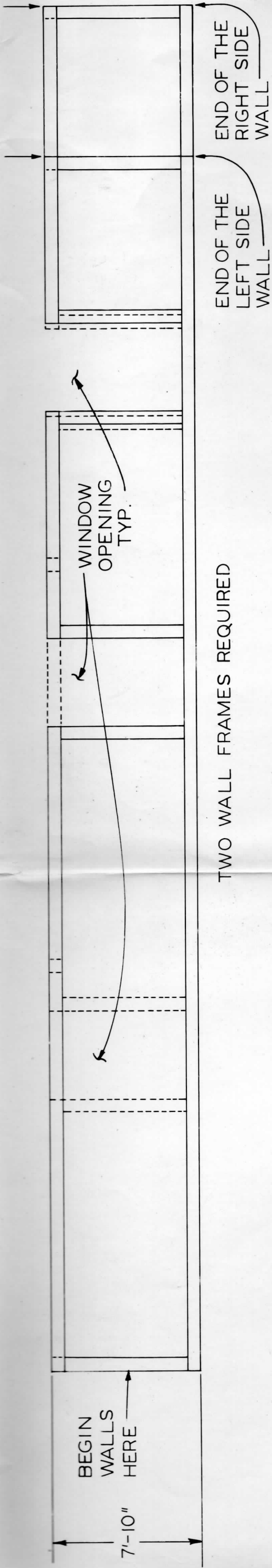
FRONT WALL AND
ROOF FRAME



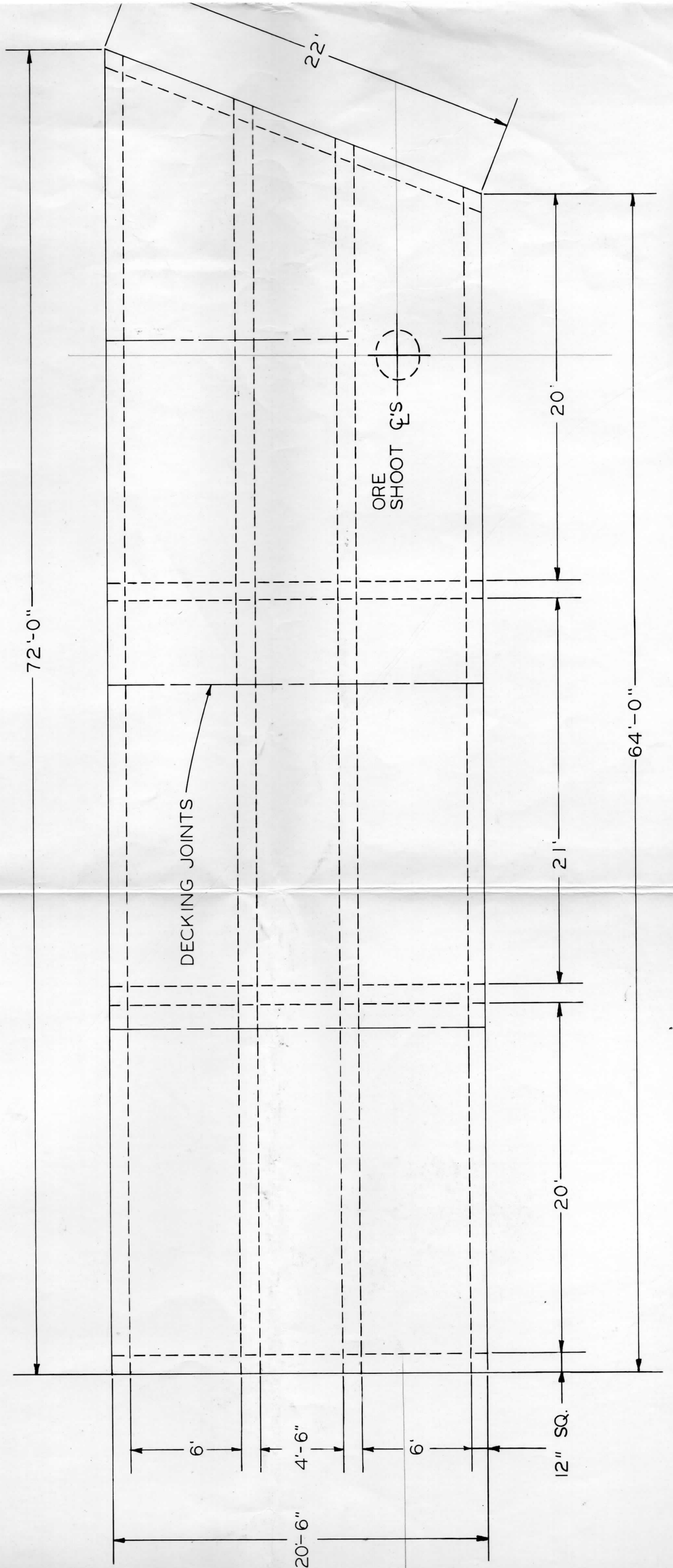
FRONT BENT

TWO CENTER BENTS
REQUIRED





TWO WALL FRAMES REQUIRED
FLOOR FRAME AND DECKING TEMPLATE



LEFT SIDE W/O ROOF OVERHANG

