

MINI-STRUCTURES

MINI-STRUCTURES INSTRUCTIONS

S6001 MILK LOADING PLATFORM KIT

The S6001 BRANCH LINE MILK LOADING PLATFORM KIT is not difficult to build. Beginners may construct this model as well as a person who has had years of modeling experience. May we suggest that you study the drawing and the part list before starting so that you may familiarize yourself with the parts and their places in the finished model. This will give you a clear mental picture to help you with your task. We recommend a good quality white cement to help you assemble this model. After cementing the parts together make sure that the joints are strong before proceeding to the next assembly step.

STEP 1 ASSEMBLE THE PLATFORM.... Cement two sides S6006 and two ends S6007 to form a square as shown on the drawing. Next, cut and fit four joist S6005 cementing them between the ends as shown on the drawing. Now, cement the floor boards S6004 on top of the platform, letting a small amount extend over at each end and along each edge. Turn platform over with floor boards down. Now, cement in each corner a support S6003. Next cut and cement on corners side braces S6008 and end braces S6009 as shown on drawing. Now, cement a foundation S6002 on the end of corner supports.

STEP 2 ASSEMBLE SHELTER ... Cement left wall S6012 and right wall S6011 to back wall S6010. Make sure that the walls are square. Next, cement two roof sections S6021 on the top of the two end walls. Now, cement two posts S6016 to the center of each end wall on inside, and also the braces S6015 across the back wall and across the two side walls. Cement a length of batton S6019 vertical over the lines on the outside of each wall. Cement a corner S6020 over joint where the back wall and the side walls meet. Next cement the base stock S6022 around the bottom of the walls on the outside. Cut and cement roofing on to roof sections. Cut a small amount and cement at the top as a comb board.

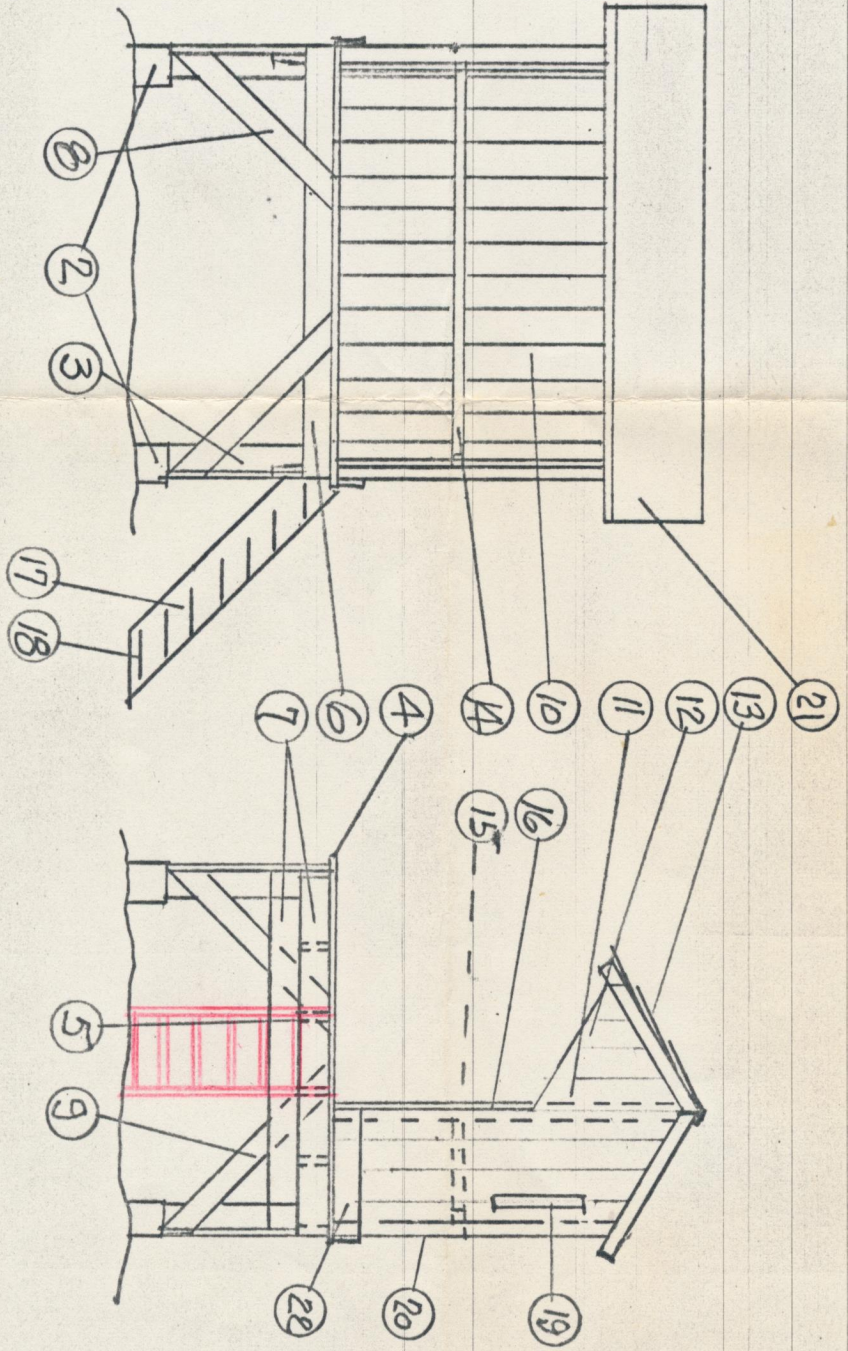
STEP 3 FINISH MODEL ... Cement the shelter on top of platform assembly as shown on drawing. Assemble steps using risers S6017 and steps S6018 as shown.

STEP 4 PAINT ... Paint the trim material your trim color before cementing on the model and it will save you a lot of work.

HAVE FUN BUILDING MINI-STRUCTURES KITS

S6001 BRANCH LINE MILK LOADING PLATFORM KIT

2	S6002	4	Foundation
3	S6003	4	Supports, corners
4	S6004	16	Floor boards
5	S6005	4	Joist
6	S6006	2	Sides, platform
7	S6007	4	Ends, platform
8	S6008	4	Braces, sides
9	S6009	4	Braces, ends
10	S6010	1	Wall, back
11	S6011	1	Wall, end rh
12	S6012	1	Wall, end lh
13	S6013	1	Roofing
14	S6014	1	Brace, back wall
15	S6015	2	Braces, end wall
16	S6016	2	Posts
17	S6017	2	Risers
18	S6018	2	Steps
19	S6019	7	Battens
20	S6020	25	Corners
21	S6021	2	Roof sections
22	S6022	1	Base material



MINI-STRUCTURES
 S6001 BRANCH LINE
 MILK LOADING PLATFORM
 KIT
 SCALE
 8/74

S6024