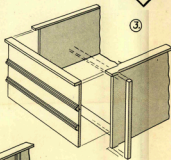
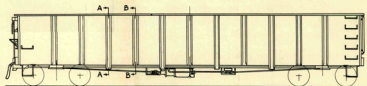
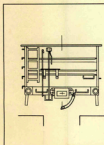
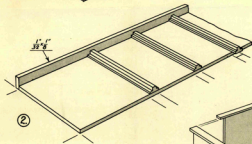
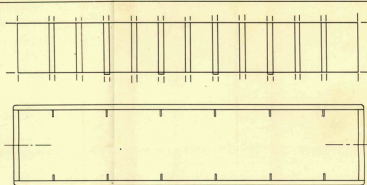
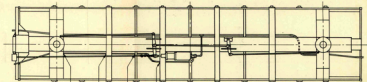


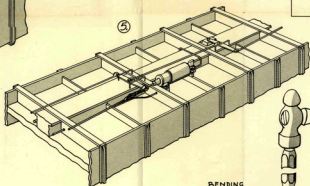
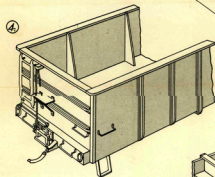
Drill crossmembers and bolster for
retainer pipe. See Φ on bottom view.
Use #32 Drill.



COUPLER DETAIL
#32 DRILL
CUT SHANK



Drill crossmembers for retainer pipe.

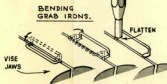


NORTHEASTERN SCALE MODELS

BOX 32 ANDOVER, MASS.

S GAUGE KIT SG-1
4 4 FT. GONDOLA

Prototype: Erie Railroad, series 4300 to 44999.



ASSEMBLY SUGGESTIONS

This kit can be assembled in an evening or two to produce a model of a popular and useful car.

Follow order of assembly as shown in the perspective drawings.

Apply two or more coats of sanding sealer to all wood parts and sand well.

Drill cross members for train pipe and retainer pipe before assembling underframe. Location of holes is shown on large cross section drawing.

Round corners of flange around top of car sides after body is assembled.

Use solder wherever possible to attach ladders, grabs, brake rods etc.

To finish this model completely, make and install the brake system as shown. This is not as difficult as it appears and makes your model a showpiece as well as an operating piece of equipment.