

Step 1. Glue the $3/32$ floor extension strip to the bottom of the $1/16$ precut floor so it is centered $5/8$ " from ends, Fig A. Next glue the scribed sides together, Fig B., and cut out windows checking to be sure your window castings fit properly. Do not cut sides to length at this time. Also cut windows from the cupola while they are attached to the sides; as this will keep them from splitting. I suggest cutting out the windows first, being very careful not to split the wood. Use a very sharp thin razorblade; patience is critical as the pieces are very small and hard to handle. (NOTE: Whenever cutting out windows and door openings, cut through the front side and turn over and you'll be able to see the shape of what you are cutting. Try cutting the back side a little and then turn back over and cut somemore, keeping window cutouts in place for added strength while cutting other windows or doorways out. Cupola windows do not need to be cut any larger, as their are no window castings.

Step 2. Fig B., cut out windows and door opening; again making sure the window castings fit properly. Notch out bottom of the precut end sheets between the slots marked so that the ends will sit on and around the floor extension. Now cut the two ends apart by cutting this in half. Glue all window castings in place now.

Step 3. Glue the end's and center block braces ($3/8$ X $1\ 9/16$ X $1\ 1/8$) to the floor, Fig A. Place the scribed ends on the floor extension and notch out the floor extension for the steps, Fig D. (NOTE: If you wish to be able to see through these end windows you will have to notch holes in the end block braces or you can paint the top half of end block braces black. Now glue the scribed ends to the end block braces. After ends are fasten, measure the sides and cut them off to length leaving the remainder of the scribed siding for the cupola. Now glue the sides in place even with the bottom edge of the floor extension. With scrap pieces of scribed siding provided make two walkways for ends, notching so they will fit in doorway on floor extension and glue in place. Paint entire assembly Scalecoat Tuscan Red #12. After paint is dry cut out plastic to fit windows and glue in place inside.

Step 4. Now take the inner roof ($5/32$ X $1\ 9/16$ X $4\ 1/2$) and bevel the sides by sanding them so it will have a rounded effect. Now glue inner roof in between the sides and ends on top of the braces.

Step 5. Next take the ($1/8$ X $1/32$) strip wood and cut pieces for door, see Fig B; cut four strips $5/8$ " long and two strips the exact width between the door opening. Glue the strip between the door opening centered between the windows. Now glue the $5/8$ " strip below the horizontal strip; even with the scribed siding. Next cut two pieces of plastic to fit the door window opening exactly. With left over siding, cut one width thick piece and trim to fit over window opening as per Fig C., and glue in place. Paint Tuscan Red.

Step 6. Now we are ready to glue the roof on. Check to make sure the roof fits properly. If not sand sides and ends until you have a good fit. Using the precut ($1/16$ X $1\ 7/8$ X $5\ 1/2$) wood provided, glue in place with $7/16$ overhang at each end and an equal overhang on the sides. Paint roof black, weathering as you desire.

Step 7. Take the 1/16 square strip wood and cut two pieces 1 7/8" long. Use hot water and soak for a couple of minutes to soften up the wood so you'll be able to curve them. Glue these under the roof overhang and clamp until dry, see Fig . Cut two more 1/16 square strip wood to fit above the 1/8" channel, see Fig C. Glue this to the 1/8" channel and bevel as per Fig C. Take the 1/8" channel with the 1/16 square strip wood glued to the top of channel and lay on drawing, Fig C., and mark with a pencil where to drill the holes for ladder stock and the O20 brass wire for railings. After you have this marked drill #75 holes and glue to end of floor extension. Paint Tuscan Red. (NOTE: Channel will have to be notched out later for your coupler.

Step 8. Cupola - Now cut out cupola sides and ends from the O40 scribed siding. Cut four pieces from the 1/16 square strip wood approximately 1/2 inch long and glue these to the inside of the cupola sides for added strength and support. Using left over 1/16 wood, cut pieces for top and bottom of sides and glue in place. The sides are glued inside the ends.

Step 9. Cupola window sills - using the O20 X 1/16 strip wood, cut four pieces 3/8" long. Notch these pieces so they fit inside windows and around the window opening. These pieces are very delicate, be careful. Paint entire cupola Tuscan Red. When dry, glue plastic window material inside over window opening. Cut window plastic 3/8" wide and trim to fit.

Step 10. Cupola Roof - using the 1/32 X 1 1/4 X 1 1/2, glue roof in place; leaving an equal overhang on the sides. (NOTE: Roof will only go on one way. It will only bend in one direction). Paint roof black. Cut two pieces of 1/8 X 1/32 for awning to length and glue in place, under cupola roof overhang, see Fig C. Paint Tuscan Red.

Step 11. Cut bolster's as marked using the 1/4" square wood, again using a sharp knife. Make two and glue them to bottom 1 5/16" from each end, see Fig D. Cut center sill to fit in between bolsters. Take remainder of center sill, cut in half and glue to other side of bolsters. Using the 1/32 X 1/16 strip wood, cut four strips 3/4" long and two pieces 5/16" long. Now cut two triangle's from the scrap 1/32 and glue these as indicated in Fig E. Glue the previous strips above the triangle's and over the center sill. Drill #32 hole for brake set and glue these in place, see Fig D. Paint entire under-frame black. Glue steps in place, Paint Brown.

Step 12. Roof walks, cut as per length in Fig E. Cut eleven roof walk supports and glue in place (1/32 X 1/16 X 3/16). (NOTE: Cupola can be position either in the center 2 1/8" from either end or offset, measure in from roof end 1 5/8". In the offset position you will have to get different measurements for the roof walks. Glue roof walks in place leaving enough space to glue cupola in later. Paint roof walks red and black underside. With scrap 1/32 X 1/16, cut pieces to support roof walk overhang and glue in place.

Step 13. Glue smoke stack in place by drilling a 11/64 hole, 3/8 from edge of roof and 3/8 from end of cupola. Paint black. Glue cupola in place. Drill #75 holes for grab irons and glue in place. Using the O20 brass wire, cut pieces for all hand railings and bend to shape, see Fig B & C. Drill #75 holes and fasten in place. Side and end hand rails are painted yellow. Mount your couplers and trucks and your Caboose is finished.

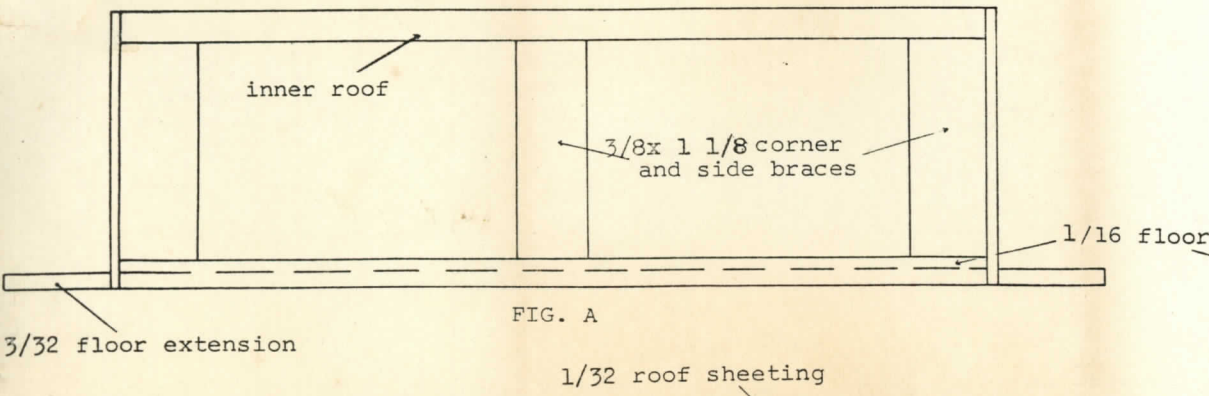


FIG. A

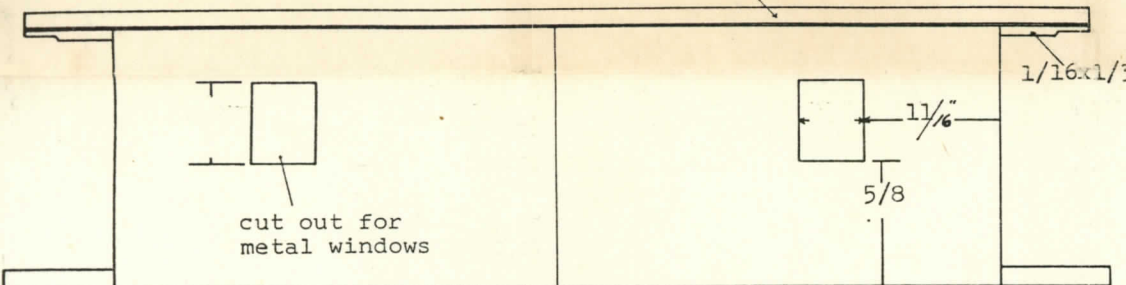
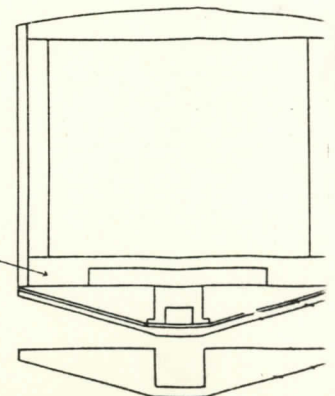
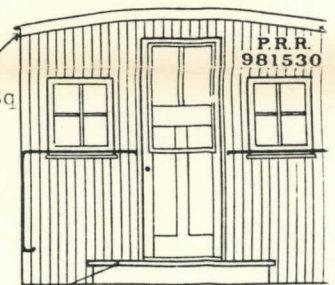


FIG. B



end platform

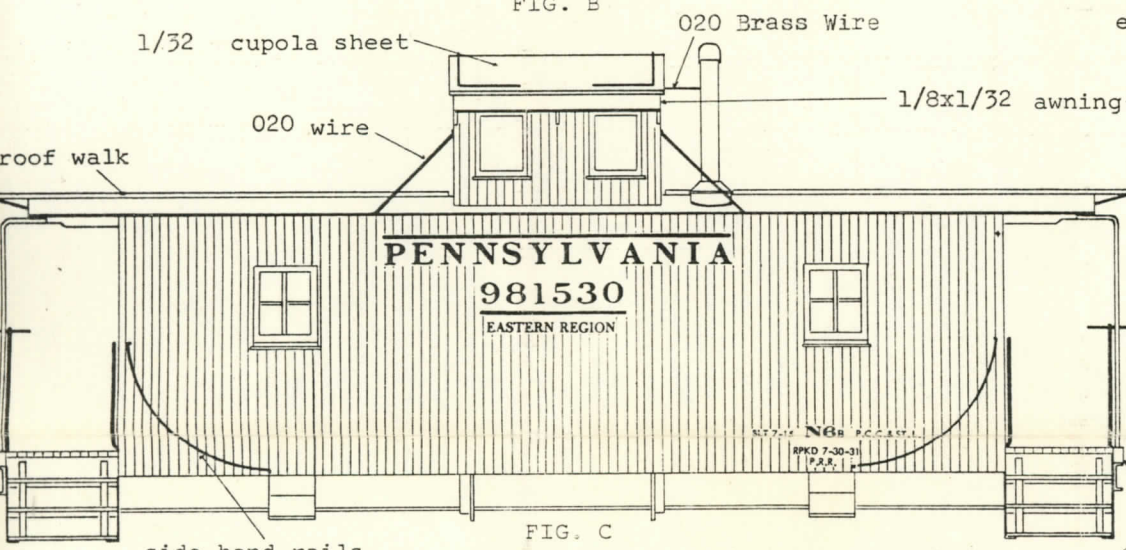


FIG. C

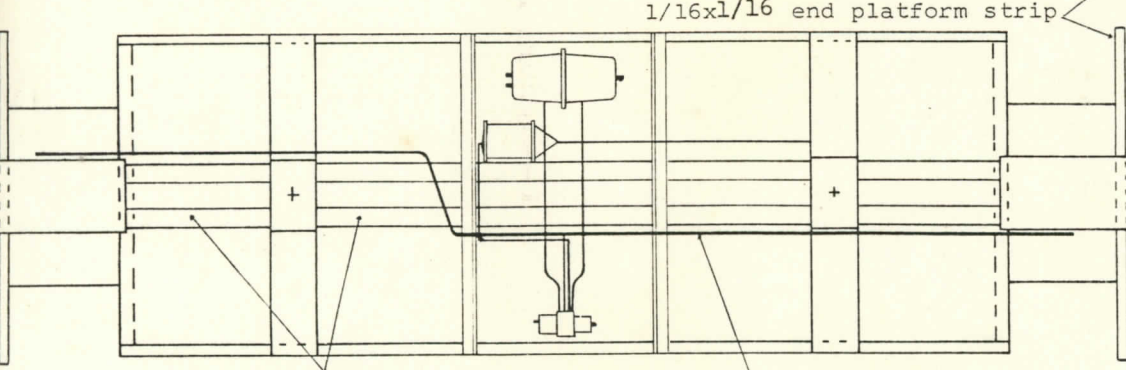
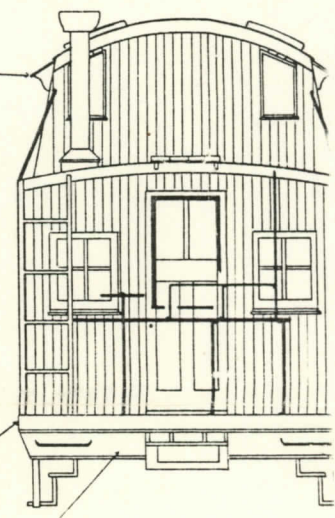
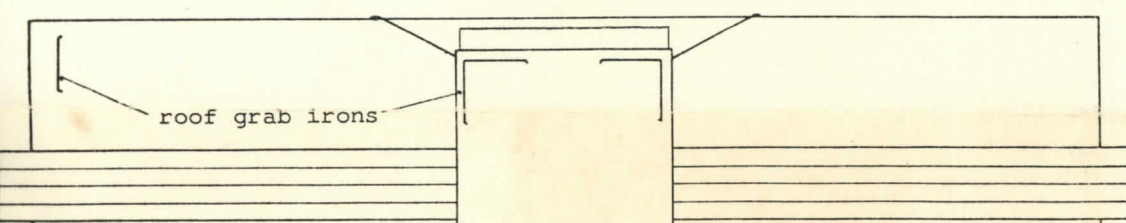
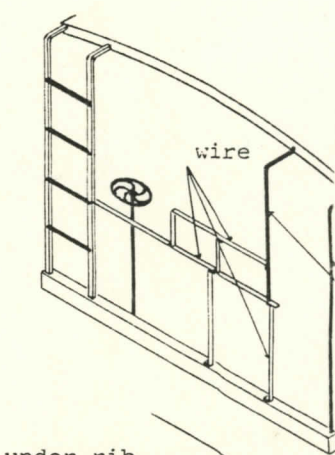


FIG. D



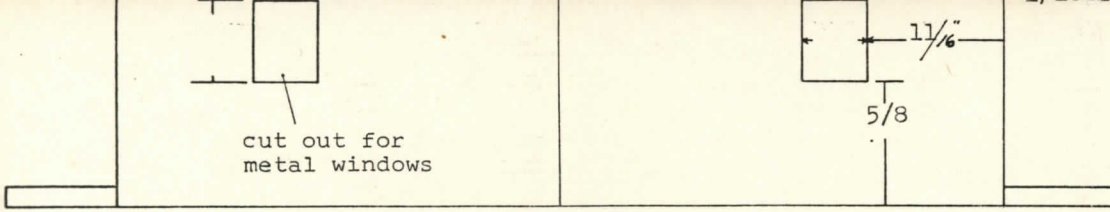


FIG. B



1/16 Sq
end platform

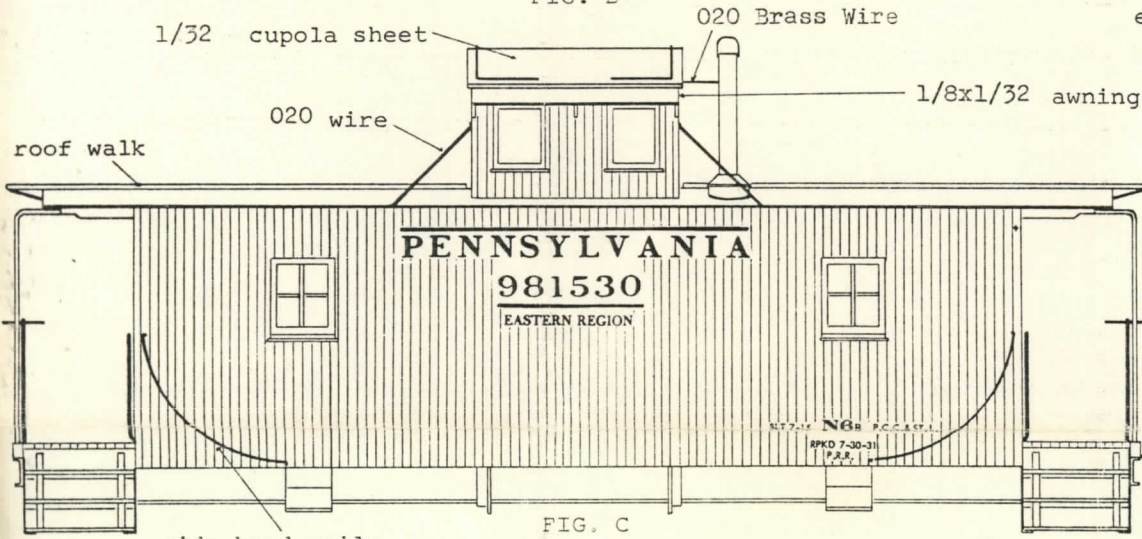
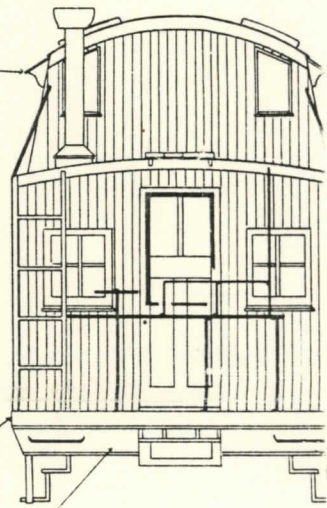


FIG. C



1/16 channel

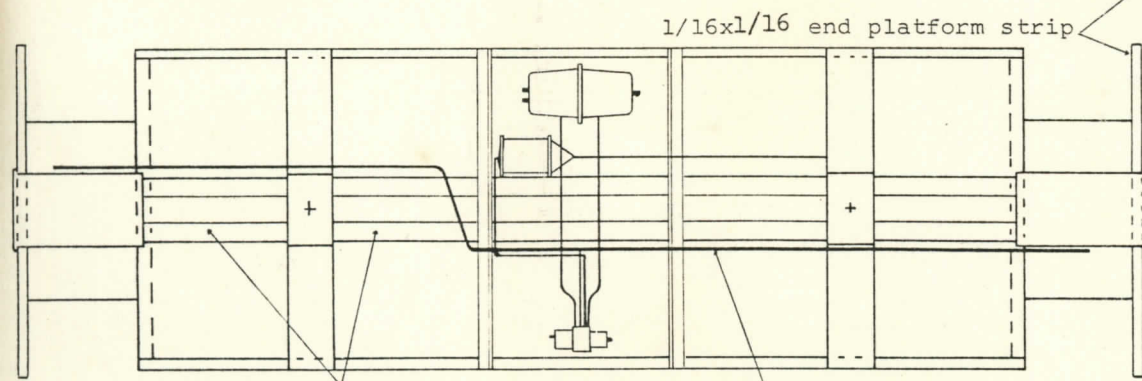
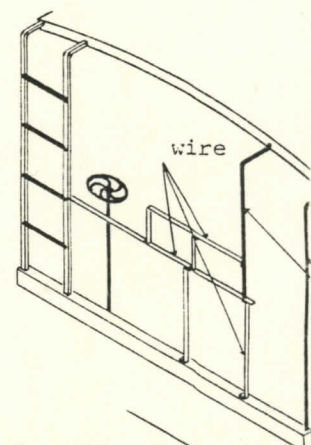


FIG. D



wire

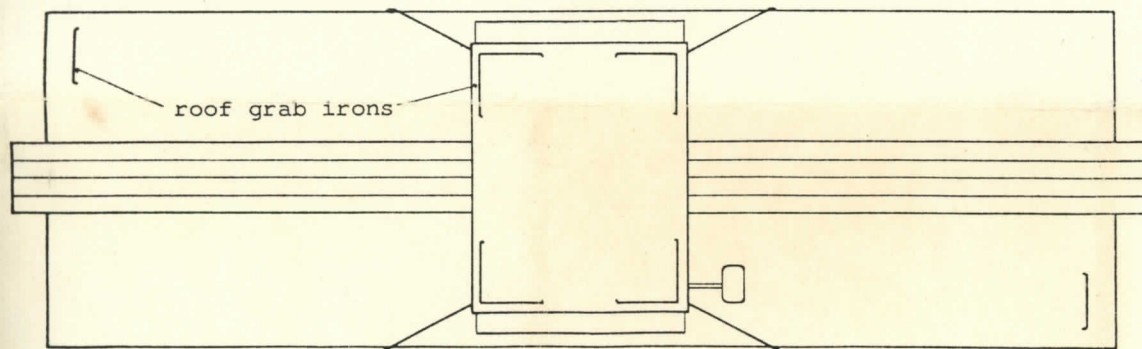
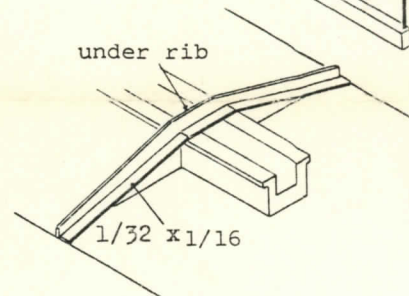


FIG. E



under rib

1/32 x 1/16