

# STRAFFORD REFRIGERATOR

## ASSEMBLY INSTRUCTIONS

(Read the following instructions carefully so that the method of construction may be thoroughly understood.)

The body is made by cementing the pre-cut roof, ends and floor as shown. These pieces are notched to give proper alignment. Cement balsa sides in place being careful to see that assembly is kept square until cement has set.

(Note: The most important factors in model car construction are keeping the piece square and in correct location and using only enough cement to hold the parts together. A good paint job is also desirable, but it will not hide misplaced parts or excess cement.)

Next, cement scored ends in place. These must be flush with the sides. When cement has set, trim flush with roof and bottom. Cut wood moulding strips, cement and trim even with roof ends.

Starting at center of car, rule cross lines for spacing of roof ribs, if they are used. Otherwise, mark center of car and lay out location of roof walk supports.

The roof ribs or roof walk supports should be put on next. These are square wood strips cemented to the roof as shown. (See supplementary data sheet covering details for the particular model you are building.) If roof ribs are not used on the prototype, the roof walk is supported by 19 equally spaced strips (roof walk supports) which are the same width as roof walk. Cement roof walk in place being sure to center it directly over center of car and allow equal overhang at each end.

Build up underbody detail as shown in drawing. Before fastening body bolsters in place, check to see that each bolster is equidistant from each end. Wipe off excess cement as you progress. Piping for A-B brake system is formed from wire supplied in the kit. This detail can be omitted if desired. Attach coupler pocket or end sill according to type of car being built.

Paint entire car body with paint supplied unless otherwise noted on supplementary data sheet. Do not paint balsa sides as these will be covered by printed sides later.

When paint is dry, trim printed sides to size and cement in place. Cement ice hatch platform in place as shown on sketch. Drill hole in roof to line up directly under lug cast on underside of ice hatch. Form ice hatch support from wire to shape shown on drawing. Drill hole through lug and attach wire as shown. After painting, place hatch in place at the same time inserting wire into hole previously drilled in roof. This will support the ice hatch in any position and allow you to close or open at will. Or, ice hatches can be cemented in a closed position if you so desire.

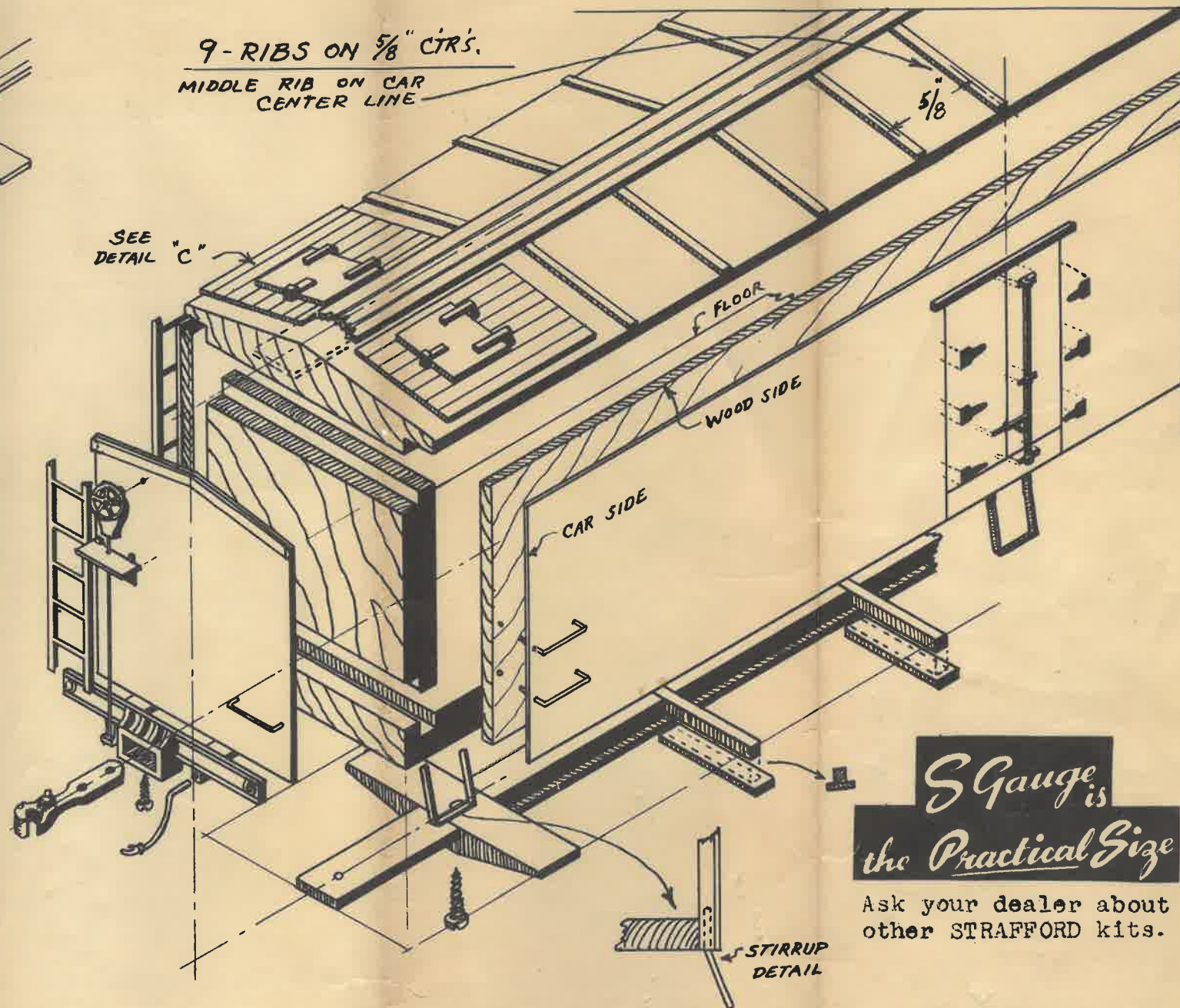
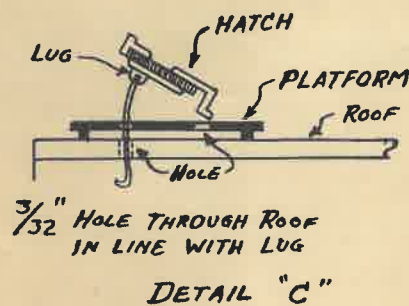
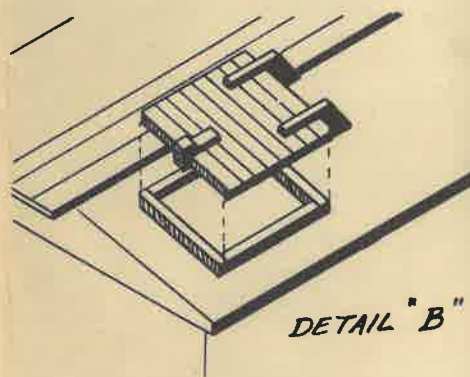
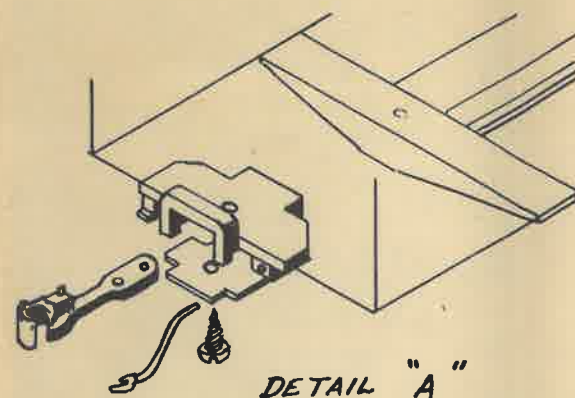
Grab irons are bent from wire and forced into the car at proper location. Latch bars and door hinges are cemented in place. Attach brake wheel, housing and platform on end as shown. Cut and cement soft wire in place for brake rod.

Ladders can be cemented directly to car sides or notched and bent as shown to fit into holes made in the car sides and ends. A drop of cement is used on each projection when attaching. Steps are bent from wire as shown and inserted in deep holes drilled up into the balsa wood sides. Also, place a drop of cement on each step before inserting. The roof walk end braces are also bent from wire and similarly attached to the car end.

Assemble trucks, locate holes for kingpin screws and attach. It is absolutely essential that the kingpin screw be practically perpendicular to the bolster face to insure good operation.

Complete painting of car and attach couplers.

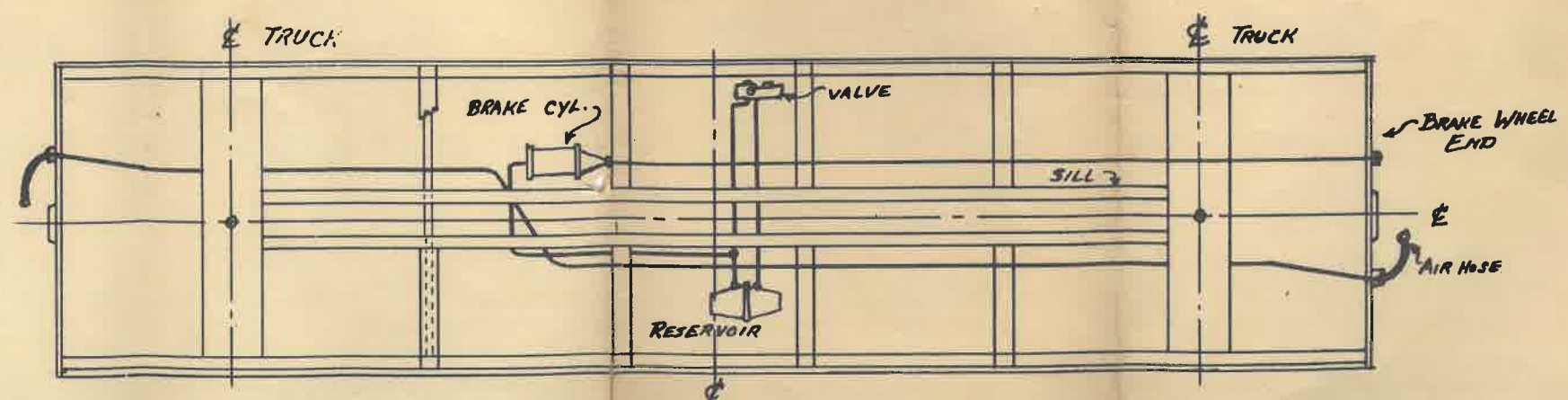
The construction of all refrigerator cars is practically the same with a few exceptions as noted on supplementary data sheet included.



**S Gauge is  
the Practical Size**

Ask your dealer about other STRAFFORD kits.

### BOTTOM PLAN



We will welcome your comments and any pictures of completed cars you care to send us.

**STRAFFORD**  
METAL PRODUCTS CO.