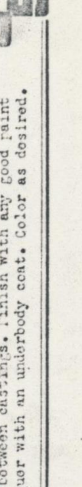
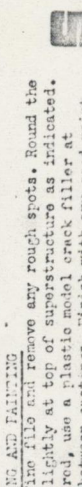
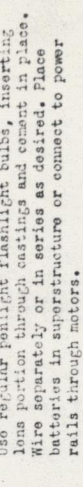
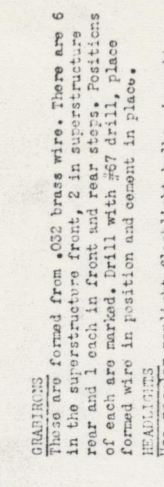
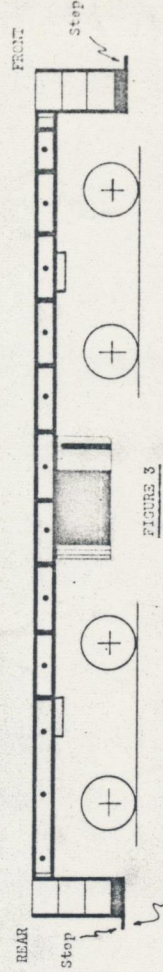
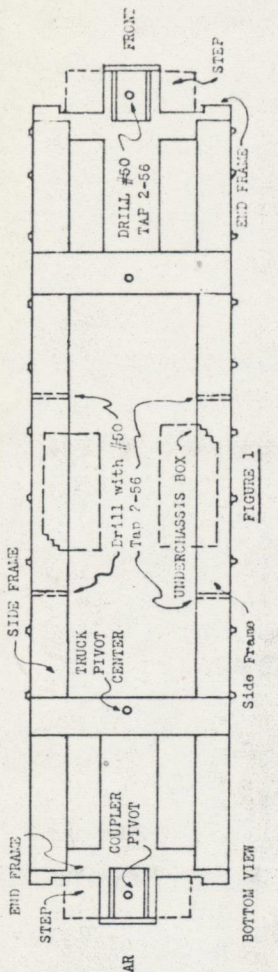


SUPER SCALE MODELS
GLENVIEW, ILLINOIS
P.O. BOX 25

INSTRUCTIONS FOR ASSEMBLY
1000 HP DIESEL SWITCHER LOCOMOTIVE

*****NOTICE*****
THE METAL USED FOR PRODUCING CASTINGS FOR THIS KIT WAS SHEARED FOR SPECIAL REPRESENTATION. IT MAY BE SOLDERED WITHOUT DIFFICULTY WITH CARE. THIS ASSEMBLY REQUIRES THE USE OF SOLDER AND MUST BE MADE BY AN EXPERIENCED WELDER WHO HAS AN APPROPRIATE LICENSE.
NO RESPONSIBILITY WILL BE ASSUMED FOR SOLDERED CASTINGS MADE.

This kit consists of assembled superstructure and cab, assembled chassis and frame, handrail joints and material, bell and flat wire for hanger, flat brass strip for front and rear steps, couplers, FASTENING SUPERSTRUCTURE TO FRAME. Refer to figures #1 and #2. Method of mounting superstructure to chassis is shown. Drill four #50 holes in side rails and top with #2-56 from outside. Mark the points of the drilled holes on the superstructure sides and drill with #44 drill. Machine screws are included and are to be used from inside.



FINISHING AND PAINTING
Use a fine file and remove any rough spots. Round the edges slightly at top of superstructure as indicated. If desired, use a plastic model crack filler at cracks between castings. Finish with any Good Paint or lacquer with an underbody coat. Color as desired.

Property of
NASC Inc.