

WC-110 INTERURBAN GONDOLA CAR

Thoroughly study the plans and instructions relating the instructions to the drawings. Assemble the kit following the number sequence on the drawings. Note that a part may be shown in more than one view. Sand all pieces and check fit-ness before gluing in place. Use only enough glue to affix parts securely removing excess glue before it is dry. Painting of the car may proceed as assembly of car is completed. Trucks which would be suitable for use with this car are the Arch Bar, or Fox trucks. Truck mounted couplers would be most suitable to allow sharp radius curves to be traversed.

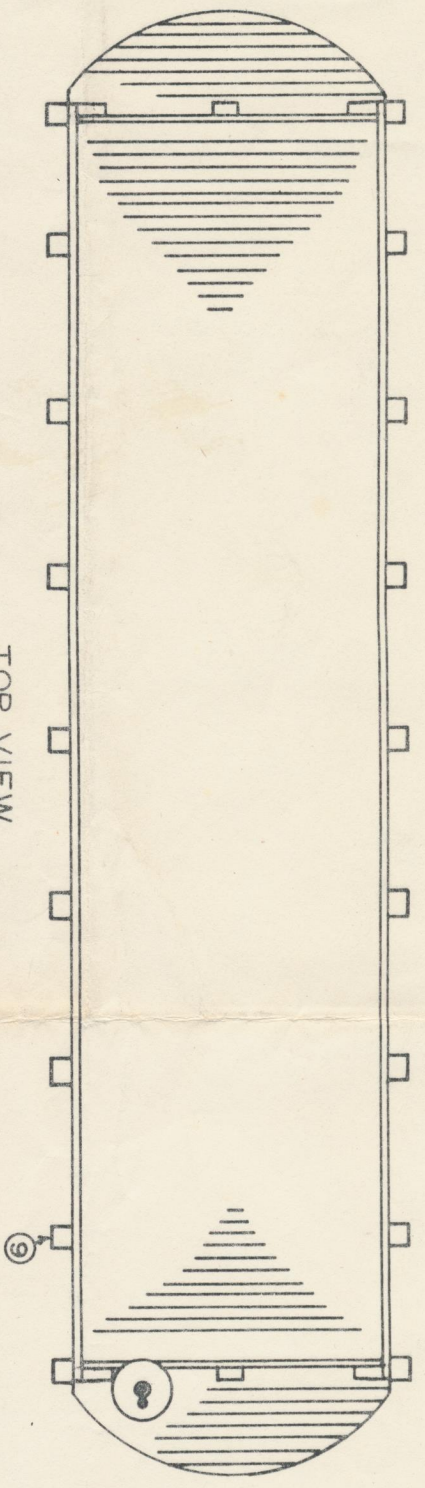
Glue scribed flooring ② to sub-floor ①. After assembly is dry, trim scribed flooring to match round ends of sub-floor and sand all edges smooth. Trim $1/32$ off each end of the bolsters ③ and glue to floor assembly as shown on "Bottom View" making sure that the bolsters are square with floor sides. Fit center sill ④ between bolsters and glue to floor, center sill should be in the exact center of car.

Cut eight needle beams ⑤ to size and glue in place as shown on "Bottom View" making certain that needle beams are square with floor sides. Locate and drill eight holes #61 in the needle beams to accept lugs from the queenpost castings ⑥, use "Bottom View" to locate queenpost mountings. Locate and drill #61 holes for the stake pocket lugs ⑨ using the stake pocket castings to help locate holes as shown on the "Side View". Also locate and drill #76 for the brake wheel staff and brake wheel pawl lug (see "Top View"). Using the stirrup step castings, locate and drill #61 holes in the sides of assembly as shown on "Side View" ⑮.

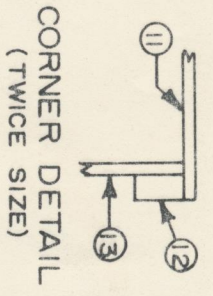
Glue queenpost castings ⑥ to needle beams alligning the slot in the queenpost with the side of the floor assembly. Cut four pieces of .020 wire 4 $5/16$ " long for the truss rods ⑦. Slide turnbuckle castings ⑧ onto wire, then bend wire to shape as shown on "Side View". Tack turnbuckles in place with a very small dab of glue. Drill small holes in the floor where truss rods will enter flooring, set truss rods in place and glue to floor.

Glue stake pockets ⑨ in place using holes located and drilled above. Cut 18 side stakes ⑩ $11/16$ " long and taper as shown on "End View" and stake detail drawing. Sand end which fits into stake pocket as necessary to get a good fit. Fit stakes into pockets. Cut eight side board pieces ⑪ to $6-9/16$ " long. Glue the side boards onto stakes as shown on "Side View". Cut corner posts and end posts ⑫ to length as shown on "End View". Cut end boards ⑬ to length as shown on "End View" and glue end assemblies together as shown on "End View". Fit end assembly between side board assembly and glue in place see "Corner Detail".

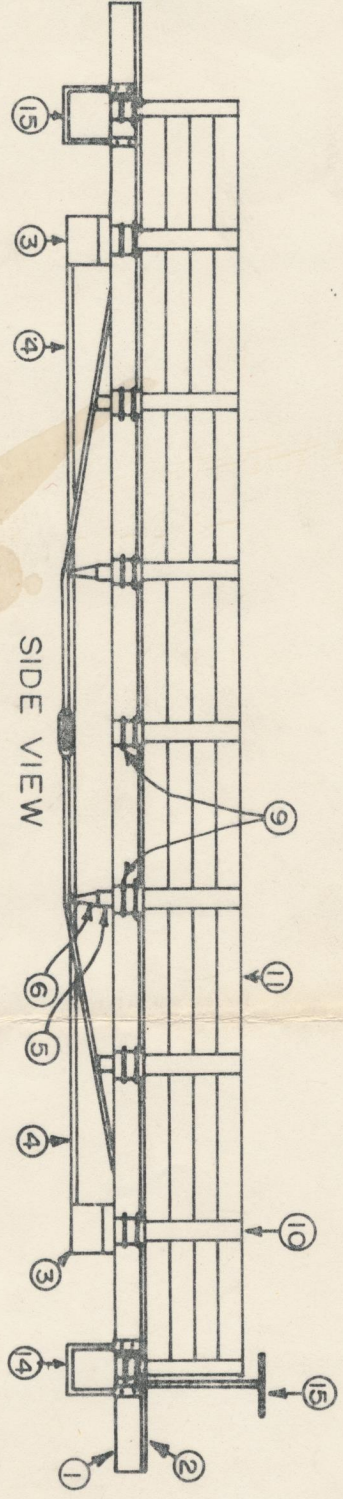
Glue stirrup steps ⑭ to car sides. Affix brake wheel ⑮ to a piece of .020 wire $3/4$ " long, slide pawl onto wire and glue to floor using holes drilled above, allign lug on pawl into hole drilled above. Add trucks and couplers of your choice to complete car.



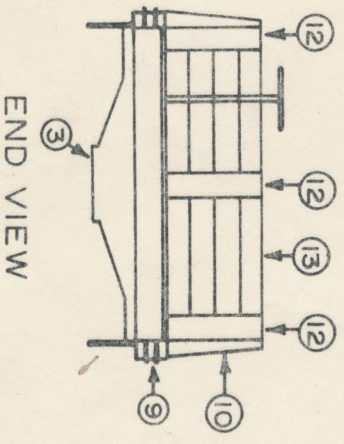
TOP VIEW



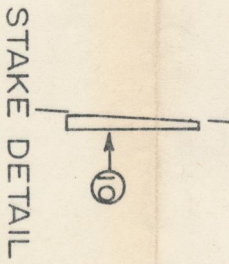
CORNER DETAIL
(TWICE SIZE)



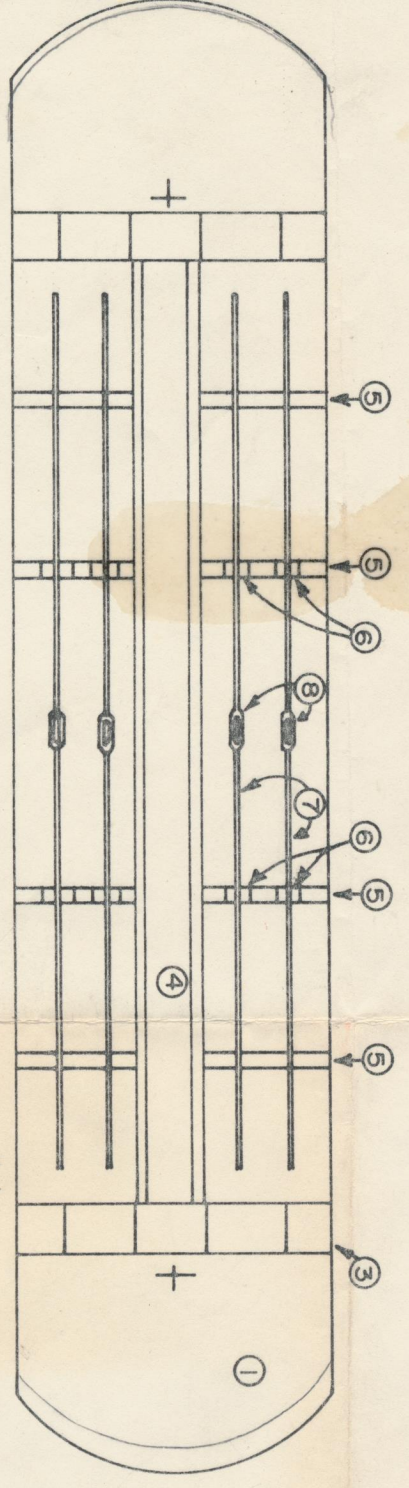
SIDE VIEW



END VIEW



STAKE DETAIL



BOTTOM VIEW


**WISCONSIN
CENTRAL
Supply**
S GAUGE
KITS
INTERURBAN
GONDOLA

Property of
NASE Inc.

Bill of Materials

1. Pre-cut floor
2. Scribed flooring
3. Bolsters
4. Center Sill
5. Needle Beams $5/64$ Square (Blue)
6. Queen Post Castings
7. Truss Rods .020 Wire
8. Turnbuckle Castings
9. Stake Pocket Castings
10. Side Stakes $5/64$ Square (Blue)
11. Side Boards $1/32$ x $1/8$
12. Corner-End Posts $1/16$ x $1/8$ (Green)
13. End Boards $1/32$ x $1/8$
14. Stirrup Steps
15. Brake Wheel

Property of
NASG Inc.